

The Montessori School *of* Raleigh

# RE-ENTRY PLAN PHASE I & II

2020-21



# RE-ENTRY PLAN

## PHASE I & II

### Table of Contents

#### **PHASE I**

|   |    |
|---|----|
| Intro and Accreditations                      | 4  |
| Re-Entry Planning                             | 5  |
| On-Campus Learning                            | 6  |
| Blended Learning                              | 7  |
| Blended Learning Plus                         | 8  |
| Plan for Toddler, Children's House and Encore | 9  |
| Plan for Elementary through Upper School      | 10 |
| Montessori Real-Life Learning                 | 11 |
| Digital Platforms                             | 12 |
| Layered Defenses and Life on Campus           | 13 |
| Life on Campus                                | 14 |
| What Does Tuition Cover?                      | 15 |

#### **PHASE II**

|  |    |
|--|----|
| <b>The Montessori School of Raleigh Mission, Philosophy and Community</b>  | 17 |
| <b>Health and Safety: MSR's Multi-Layered Defense</b>  | 18 |
| Health and Safety Decision Making, Daily Health Screenings and Health Monitoring, Medical Professional on Campus, Handwashing and Hygiene, Face Masks, Social Distancing, Student Cohorts, Campus Visitors, Health and Safety Education Program, Family Travel, Health and Safety at Home, Health and Safety Communication |    |
| <b>COVID-19 Exposure Protocol</b>  | 22 |
| <b>Health and Safety: MSR's Multi-Layered Defense (Cont'd)</b>   | 23 |
| Parent Partnership and Transparency, Counseling and Mental Health  |    |
| <b>Academic Programs</b>   | 24 |
| Toddler and Children's House, Lower and Upper Elementary, Middle and Upper School, Agility Lab, Early Bird, Encore and Studios   |    |
| <b>Student Life and Activities</b>   | 26 |
| Buses, Lunch and Snack, Outdoor Education, Field Trips and Extended Trips, Athletics, Community Events, Student Activities   |    |
| <b>Campus Facilities</b>   | 28 |
| Drop-Off and Pick-Up, Cleaning and Sanitizing, Air Filtration, Playgrounds, Building Traffic Patterns  |    |
| <b>Thank You</b>   | 30 |
| <b>MSR Administration</b>  | 31 |
| <b>Re-Entry Plan Communication</b>   | 32 |

# PHASE I



# RE-ENTRY PLAN

Grounded in mission and rooted in the legacy of 45 years of exemplary Montessori teaching, we look forward to reopening the campus in the fall and to the growth and progress another year will bring. This Re-Entry Plan is designed with the safety and well-being of all in our community as the highest priority.



**AMERICAN MONTESSORI SOCIETY**  
education that transforms lives  
Accredited Member School



**cognia**



National Association  
of Independent Schools



## KEY

|      |                          |
|------|--------------------------|
| T/CH | Toddler/Children's House |
| LE   | Lower Elementary         |
| UE   | Upper Elementary         |
| MS   | Middle School            |
| US   | Upper School             |

“Adaptability – this is the most essential quality...”

— Dr. Maria Montessori  
From Childhood to Adolescence

## Campus Opens August 25

# RE-ENTRY PLANNING

## The Process

MSR has established a Ramp-Up Task Force comprised of the seven Subgroups shown below, each working on a distinct task related to reopening the school in the fall. Across all subgroups, the goal is to create a re-entry plan that prioritizes the safety and wellness of our students and employees, ensures an effective delivery of the Montessori and International Baccalaureate programs, and offers families and the school the flexibility needed in these uncertain times.

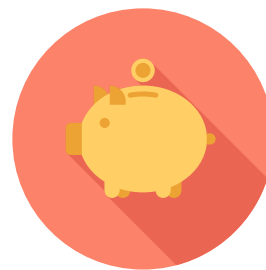
We plan to reopen for on-campus learning as originally scheduled on August 25, as outlined in the [Academic Calendar](#). As we have done in recent years, arrivals will be staggered across a number of days to provide time to orient students new to MSR and students moving to a new grade. The following Flow Charts, one for Toddler/Children's House parents and one for Lower Elementary through Upper School, present the decision paths we will use, as well as entry options for families.



Opening Day



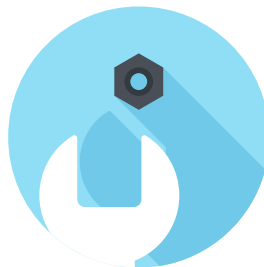
Program Delivery



Business



Health & Safety



Campus Facilities



Academic Programs



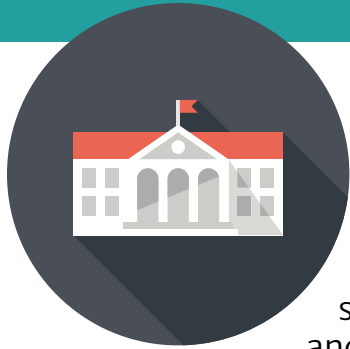
Communications

## The Definitions

See following pages to learn more about On-Campus Learning, Blended Learning and Blended Learning Plus.



# ON-CAMPUS LEARNING



We are planning for on-campus school operations to resume in the fall. The community will follow rigorous hygiene and safety protocols that reflect guidance from the CDC, OSHA, EPA, and NC Department of Health and Human Services, our national and regional independent school associations (NAIS, NCAIS), local consulting health professionals, and our school nurse.

Specific decisions and plans regarding on-campus modifications will be finalized over the next few weeks; however, current considerations can be found on Page 10 of this re-entry plan.



You may assume that daily drop-off and pick-up times will be staggered to reduce the number of people congregating.



Athletics offerings will be determined by NCHSAA recommendations and requirements.



Encore will be offered. No decision has been made on After School Studios.



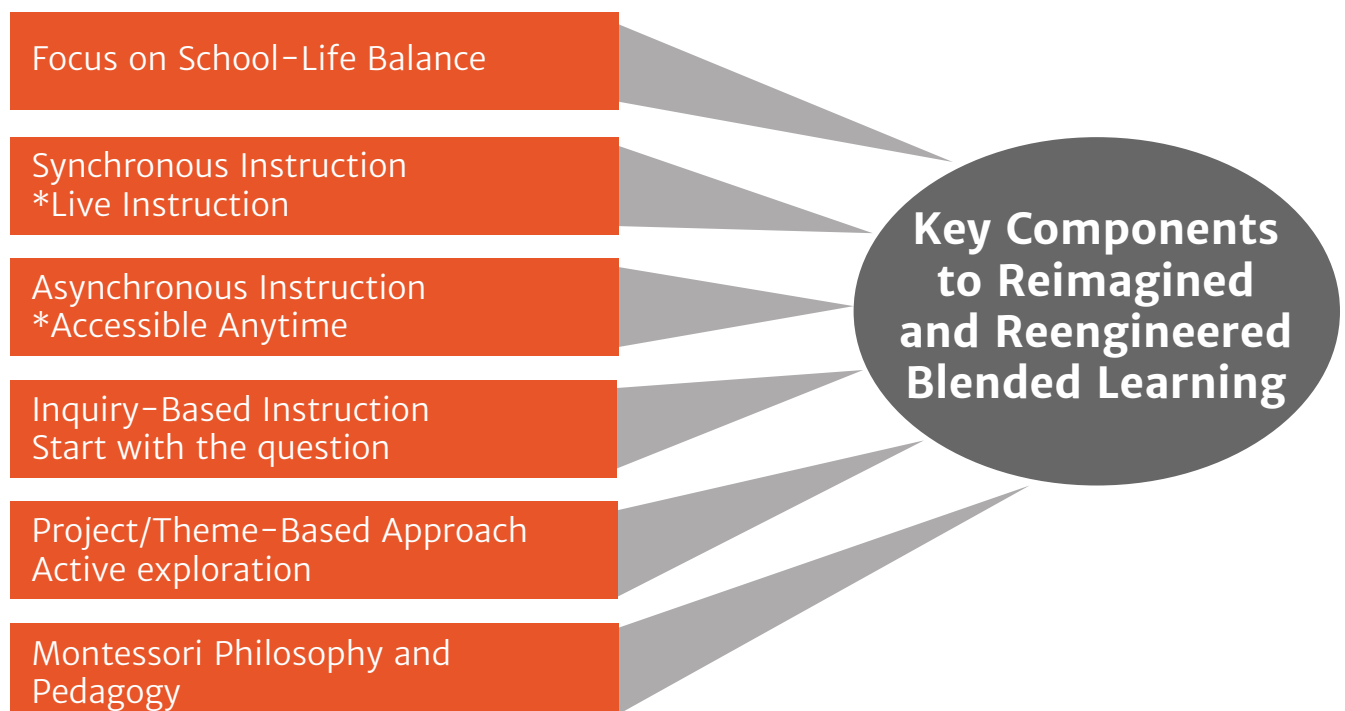
# BLENDED LEARNING



We are planning for waves of interruption given predictions about a second wave of the virus. Should that occur, we will pivot to Blended Learning, a *reimagined* and *reengineered* virtual instructional approach.

When we left our campuses on March 13, we pivoted to Emergency Virtual Learning in response to a global emergency. **We are no longer in reactive mode.** We have analyzed the lessons, tools, techniques, and software we used from March through the end of the year and selected those that were most effective. Over the past several weeks, we have consulted with experts, and twenty of our faculty are engaged now in intensive professional development to learn from leading virtual-learning authorities around the country on topics ranging from theme-based instruction and project-based learning in a virtual setting to best practices in pacing the flow of the instructional day and in fostering social-emotional learning and community building. We are now refining our industry-leading approach to ensure innovative and effective continuous learning regardless of mode of delivery.

During the recent Emergency Virtual Learning period, MSR distinguished itself in the delivery of full academic and social-emotional curricula, blending synchronous with asynchronous instruction and enhancing the learning experience with initiatives to build community and connection. At the heart of our success is our Montessori philosophy: we guide students to become resilient, self-directed, collaborative, intrinsically motivated and adaptable. These are precisely the skills that make it possible for our students to excel in a virtual setting.

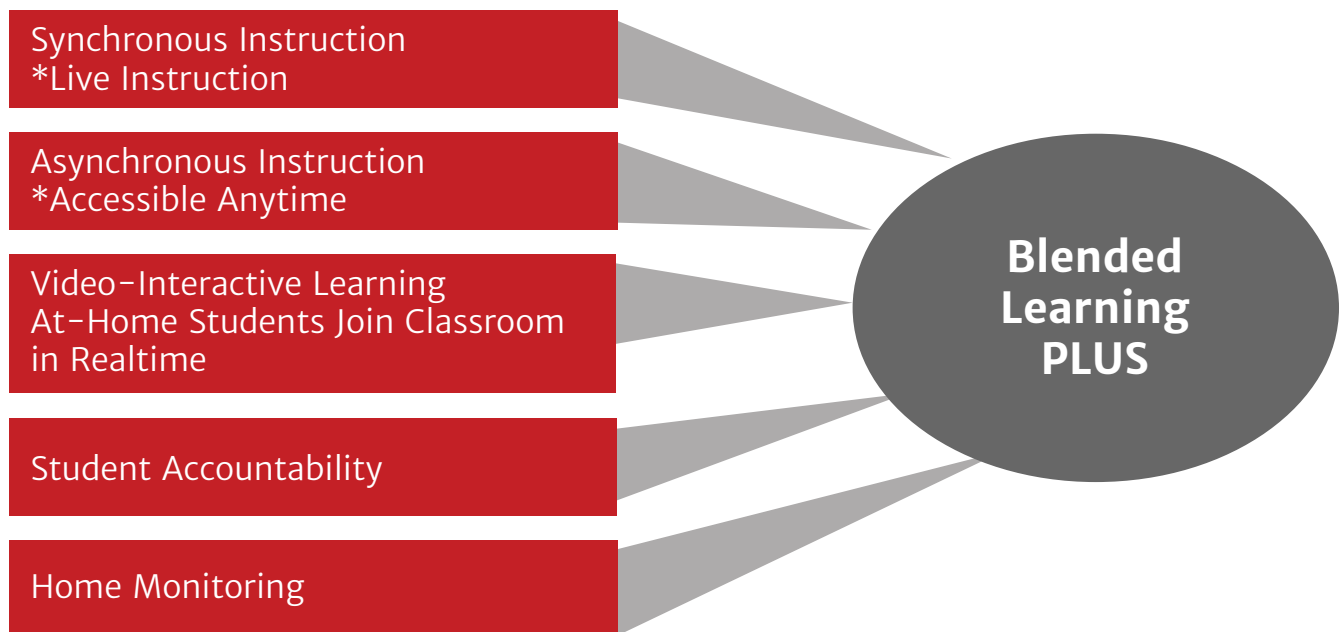


# BLENDED LEARNING PLUS



As educators we know that in-person, place-based teaching creates the most effective learning because of the ease with which we create a natural flow of interactive and collaborative synergy. In these uncertain times, however, we understand that some families may not be ready to have their child on campus. For those families we are making accommodations by offering Blended Learning Plus, a blend of synchronous (live instruction), asynchronous (accessible anytime), and video-interactive learning (students at home joining the classroom on campus through video-conferencing), with regular modifications to ensure a well-balanced curriculum with both academic and social-emotional focus. The formula for the “blend,” i.e., the proportion of each approach, varies by age and level. Synchronous and asynchronous will be used primarily in LE and UE classes, with students at home joining in community meetings and other group activities; asynchronous and video-interactive will be used primarily for MS and US students.

Blended Learning Plus requires students to be self-directed, organized, responsible, and accountable for their academic success and requires parents to assume some responsibility for their child’s learning.





# FLOW CHART

## PLAN FOR TODDLER, CHILDREN'S HOUSE AND ENCORE

We recognize that the needs of young children require significant supervision and support to facilitate their learning. We therefore plan to prioritize sustaining the on-campus experience for T/CH students even if we pivot to Blended Learning (synchronous and asynchronous) for the Elementary, Middle, and Upper School divisions. We recognize, however, that some families may not be comfortable with their child returning to campus. Blended Learning Plus will be an option for these families.

In consultation with MSR's Ramp-Up Reopening Task Force, medical professionals, and local officials, MSR is prepared to execute the physical campus modifications and health and safety protocols needed to support students safely returning to campus.

YES

The State of North Carolina and local governments have lifted the stay-at-home orders for childcare facilities. (Given the critical service pre-school programs provide to working parents, we believe it is likely that these programs will be allowed to remain open even if programs for school-age children are ordered to shift to remote instruction.)

NO

YES

[CLICK HERE  
FOR SPECIAL  
COVID TRPP](#)

As a family you have determined that you are comfortable with your child returning to physical campus.

YES

### ON-CAMPUS LEARNING

Your child begins the 2020-21 academic year physically distanced on campus and adhering to required health and safety protocols. Should shut-down orders result in students LE through US not being on campus, physical distancing on campus for T/CH can be expanded, thus further lowering student-teacher ratios.

NO

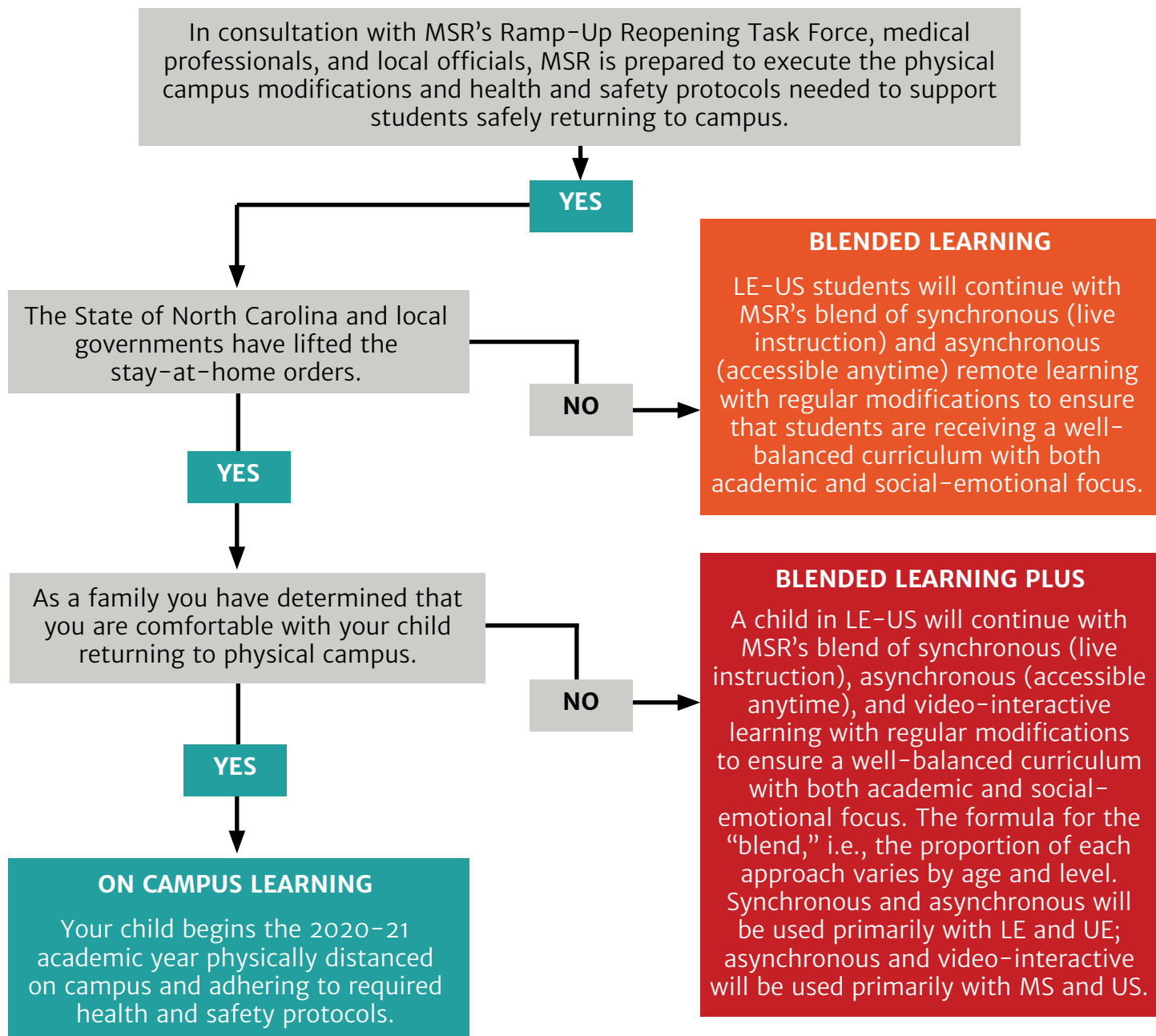
### BLENDED LEARNING PLUS

Your child receives instruction through synchronous (live instruction) and asynchronous instruction (accessible anytime). One-on-one touch point opportunities are provided weekly by teachers, both for students and for parents. Prepackaged material kits are provided to encourage your child's independence and reduce the time commitment for you.

# FLOW CHART

## PLAN FOR LOWER ELEMENTARY THROUGH UPPER SCHOOL

The campuses are scheduled to reopen on August 25 unless authorities require us to move to Blended Learning. MSR is fortunate to have spacious teaching and learning spaces both indoors and outdoors, and we have confirmed that all students can fit comfortably on the campuses with ample physical distancing. Therefore, should public schools cease in-person operations due to the inability to physically distance, MSR would continue to deliver on-campus instruction.



# ON-CAMPUS/BLENDED LEARNING/LEARNING PLUS AND MONTESSORI REAL-LIFE LEARNING



School is meant to prepare students for each advancing step toward success in college and, ultimately, life. But a child's school years are much more than just preparation for "real life." They *are* real life, and the ways in which our students learn and live today, in a global-pandemic world, shape the people they will become tomorrow. Montessori students succeed because every day they are learning how to cope, adapt, and thrive.

**Resilient**

**Self-Directed**

**Intrinsically Motivated**

**Collaborative**

**Adaptable**

**Critical Thinkers**

**Key  
Competencies  
in Montessori  
Learners**



# DIGITAL PLATFORMS



Our Director of Educational Technology researches and tests the industry-standard digital products so we can integrate the best platform options to provide the most seamless delivery of our program virtually or in person.



Veracross is our primary portal for student and family information, grades, calendars, announcements, and more. Parents and students can access their Veracross accounts through [msr.org](https://msr.org).



Google Classroom, a Learning Management System, will be utilized for assignment management, videos, and class announcements. Students can also turn in their work on that platform.



Zoom is a robust video conferencing tool that we will use for synchronous (live) class meetings and instruction.



Google Meet is another video meeting tool that can also be used for synchronous large- and small-group connections.



Loom will be our vehicle for sharing asynchronous screencasts and instructional videos with students.



ManageBac is the leading IB learning management system (LMS) for planning, assessment and reporting. This system empowers MSR faculty to design and integrate vertically aligned Montessori and IB curricula in grades 7 through 12.

# LAYERED DEFENSES AND LIFE ON CAMPUS



While specific decisions and plans will be finalized and communicated over the next several weeks as more information and guidance from public health agencies are updated, we are developing strategies in alignment with best practices to mitigate risk to our students and employees. Protocols being considered for further development include the following:



Daily screenings and temperature checks for all students and employees



Traffic patterns, foot and driving, designed to physically distance



Establishing “bubbles,” i.e., learning cohorts of students and teachers who stay together throughout the day, thus reducing exposure and facilitating contact tracing



Parents and visitors will not be permitted in buildings



Students will bring lunches and snacks; we will discontinue delivery of food to campus



Medical personnel will be on campus



Staggered schedule for drop-off and pick-up



All students from LE through US, all employees, and parents dropping off and picking up students will be required to wear masks



The potential to require all students and families to limit travel two weeks before the start of school to avoid exposure



Athletic options will be determined by NCHSAA



Enhanced cleaning with equipment specifically designed to sanitize surfaces; increased air filtration



Outdoor spaces will be utilized to full potential

# LIFE ON CAMPUS



Despite global uncertainty, we know with certainty that students learn best in a community of caring adults who know them and understand their needs. Even as we physically distance, wear masks, wash hands, avoid large groupings, and meet in cohorts, learning continues. Children and adolescents grow academically, socially, and emotionally and move steadily forward to become agile thinkers, poised communicators, gracious collaborators, and engineers of their own authentic and fulfilling lives.



**Ideal Student/Teacher Ratio**



**Traditions of Celebrating Success**



**Social-Emotional Learning**



**Gold Standard Curricula—Montessori and International Baccalaureate**



**Outstanding Early Childhood Program**



**Athletics and Physical Activity**



**Student Life Curriculum**



**Experiences in the Arts**



# WHAT DOES TUITION COVER?



Tuition covers approximately 85% of costs and pays for continuity of learning and community, which exists on and off campus. We have been fortunate to have the resources we needed to provide a robust virtual learning experience when that became a necessity.

## Facilities

These expenses remain with slight modification regardless of mode of instruction

- Maintenance and Cleaning
- Repair and Replacement
- Supplies and Equipment

## Educational Instruction

- Educational Technology
- Library Materials
- Academic Resources
- Athletic Equipment
- Drama, Music, and Art Supplies

## Financial Aid

- Financial aid is essential for expanding access to a broad range of families seeking the benefits of a Montessori education
- Special COVID-19 Relief Fund

## Operations & Infrastructure

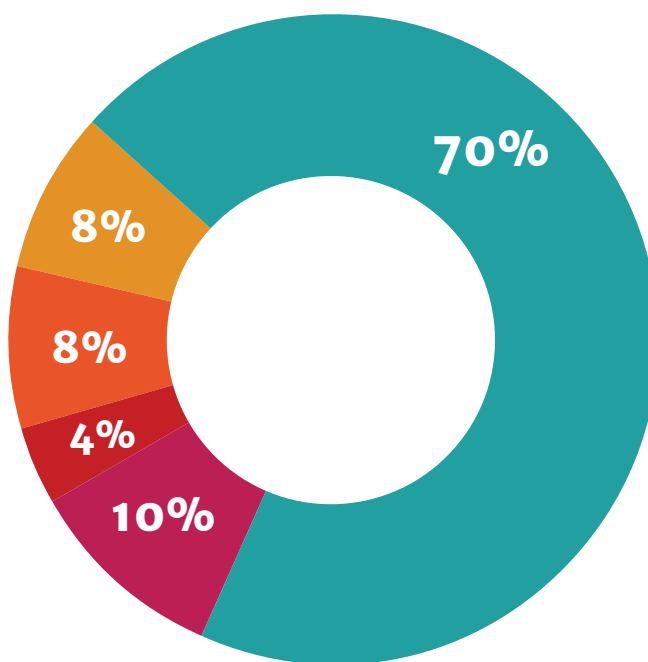
These expenses remain regardless of mode of instruction

- Business Expenses
- Utilities
- Insurance
- Memberships
- Accreditations
- Professional Development
- Technology
- Transportation
- Mortgage Payments

## Human Resources

Teachers and staff to support and implement the development and delivery of curriculum

- Instructional Methodology
- Social-Emotional Learning
- Social-Emotional Support
- Arts/Athletics/Clubs
- Leadership Opportunities
- Community and Student Life
- College Planning and Counseling
- Learning Support and Accommodations



The remaining 15 percent of expenses the school incurs annually is covered by The MSR Annual Fund and by auxiliary programs, e.g., SummerScape and Encore. We are grateful for the extraordinary generosity of MSR parents this year. Our parents' generous gifts, including those made as donations of SummerScape and Encore fees, played a large role in boosting The MSR Annual Fund to a historic high in the midst of COVID-19. The MSR Annual Fund is critical to the success of the School and the delivery of a robust virtual program.

To review the modified COVID-19 Tuition Payment Plans, [please use this link](#).

# PHASE II



# THE MONTESSORI SCHOOL OF RALEIGH MISSION, PHILOSOPHY AND COMMUNITY

## Mission

*The Montessori School of Raleigh is the Triangle's modern embodiment and mindful practice of the time-proven Montessori philosophy, developing agile thinkers, poised communicators, and gracious collaborators—engineers of authentic and fulfilling lives.*

Grounded in mission and the efficacy of the Montessori and IB curricula and buoyed by the remarkable strength in this community, we are going to extraordinary lengths to make everyone's health and safety our first priority as we open a new school year. In this Re-Entry Plan Phase II, we explain in detail protocols, approaches, and expectations.

Our success in keeping everyone as free from risk as possible depends in large part on the cooperation of all in the community. Our guidelines are clear. We are prepared and committed to teaching all community members to adopt and practice new habits and behaviors. We will model best practices in health, personal hygiene, and safety and will expect that everyone in the MSR community will take all precautions to protect themselves and others.



There is an old Irish proverb, “In the shelter of each other the people live.” Our opportunity during this world crisis is to prove that the power of community sustains us as we all contribute fully to the common good.

## Campus Opens August 25

# HEALTH AND SAFETY: MSR'S MULTI-LAYERED DEFENSE

## Health and Safety Decision Making

MSR decisions for health and safety are based on science, research and data. We look to government agencies, such as the Center for Disease Control (CDC), American Academy of Pediatrics, North Carolina Department of Health and Human Services (NCDHHS), World Health Organization (WHO), and health officials to guide us. In addition, we have a strong partnership with the North Carolina Association of Independent Schools (NCAIS), the American Montessori Society (AMS), the International Baccalaureate Organization (IBO), the National Association of Independent Schools (NAIS) and other educational organizations, all of which have generously shared guidance. We have used all of these resources to design the following plan. Further, we are committed and fully prepared to execute on our plan and will expect parents to follow through on this critical partnership as noted.

## Daily Health Screenings and Health Monitoring

Parents will perform a health check for each of their students every morning at home before departing for school. Parents will keep students home who are experiencing any of the following symptoms:



|                             |   |                            |
|-----------------------------|---|----------------------------|
| • Fever of 99.6°F or higher | • Shortness of breath or difficulty breathing | • Muscle or body aches     |
| • Chills                    | • New loss of taste or smell                  | • Congestion or runny nose |
| • Cough                     | • Sore Throat                                 | • Nausea or vomiting       |
| • Fatigue                   | • Diarrhea                                    | • Headache                 |

Students may return to on-campus learning after 72 hours without symptoms and with documented clearance from a physician's office. Siblings will stay home as well and may return at the same time as the child with symptoms. Students with allergies that cause symptoms similar to COVID-19 will need a doctor's note on file with the school nurse.

Student temperatures will be checked by faculty and staff as car riders exit their vehicles. Student temperatures will also be checked before students are permitted to board MSR school buses in the morning. Any student with a temperature above 99.6 degrees will be required to return home. If a student's initial temperature reading shows an elevated temperature, staff will test again with a different device to ensure accuracy. Additionally, the school nurse and faculty will conduct temperature and oxygen saturation spot checks during the school day to catch early any students developing symptoms of illness.

# HEALTH AND SAFETY: MSR'S MULTI-LAYERED DEFENSE

## Medical Professional on Campus

The Montessori School of Raleigh has hired a full-time school nurse to provide medical expertise to our school. The school nurse will manage and oversee student and staff health on campus, administer health screenings, administer medications, provide first aid and patient care, oversee the implementation of student health plans, provide health guidance to administration and faculty, implement and oversee faculty health and safety training, oversee the purchasing of health care supplies, triage injuries and illness, collect and oversee medical documents, process doctors notes/clearances, manage and administer EpiPens®, and handle all parent medical communications for the school. Additionally, the school nurse will oversee the management of the school Health Centers, which are located on both the Lead Mine Campus and the Brier Creek Campus.

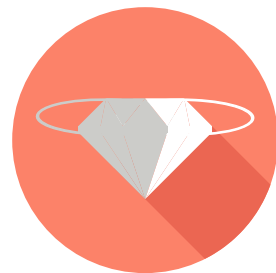


## Handwashing and Hygiene

Handwashing education will be an integral component of our MSR health and safety curricula. Handwashing for students and faculty will occur at regular intervals throughout the day and at additional times as needed. Hand sanitizers will be available at classroom doors and at the entrances and exits of buildings.

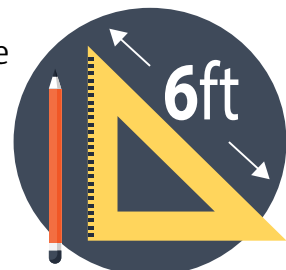
## Face Masks

All students in Children's House through Grade 12, as well as all faculty and staff, will be required to wear masks on campus at all times. Students are required to have a clean face mask for each day and also two additional masks in case the first one gets wet or soiled. Students will wear masks outside, as they sometimes have trouble maintaining social distance. We will provide students the opportunity to take scheduled mask-breaks outdoors following social-distancing guidelines. Students will learn recommended protocols for putting on and removing a mask safely.



## Social Distancing

Due to our spacious campus and large classrooms, MSR has plenty of space for all of our enrolled students to return to campus and safely learn while physically distancing. Student workstations and desks will be distanced six feet or more from each other. Students will receive comprehensive instruction on maintaining social distance in classrooms, hallways, sidewalks, outdoor education spaces, etc.



# HEALTH AND SAFETY: MSR'S MULTI-LAYERED DEFENSE

## Student Cohorts

On both campuses students will be taught in cohort groups or bubbles to reduce the number of individuals with whom they come in contact on a daily basis, thus, reducing exposure to illness. On the Lead Mine Campus student cohorts are assigned by classroom and teacher. For example, Lower Elementary I students will only interact with students and teachers assigned to that classroom; they will not come in contact with students and teachers in other classrooms on campus. On the Brier Creek Campus student cohorts will consist of students in the same building or division. Students from the Middle School and Upper School will not take classes together or be in the same occupations, activities, intersessions, athletics, etc. Brier Creek students will follow their normal class schedule and move from classroom to classroom following the campus social-distancing traffic plan.



## Campus Visitors

Parents, visitors, and outside vendors will not have access to MSR buildings and classrooms to maintain the health protections afforded by the student cohort groups. When appropriate and while at school, students may receive educational support services virtually.



## Health and Safety Education Program

The faculty, in consultation with medical professionals, has developed a comprehensive student health and safety education program for all school levels and divisions. Students will receive health and safety lessons in all classrooms, from every teacher, in each course, including in physical and health education and other interdisciplinary classes. The first month of the school year will include frequent and in-depth lessons to firmly internalize and habituate healthy routines and knowledge in students. Lessons and activities to reinforce these skills will occur at regular intervals throughout the school year, especially when returning to campus from a period of Blended Learning. Teachers have designed experiential, hands-on lessons and activities that will engage students through multiple learning styles and modes.





# HEALTH AND SAFETY: MSR'S MULTI-LAYERED DEFENSE (CONT'D)

## Family Travel

In light of the increasing number of COVID-19 infections both within and outside the state, we strongly discourage all non-essential domestic and international travel 14 days prior to the start of the school year. We understand family and professional obligations may require you to travel outside of North Carolina within that period. In order to maintain the safety of all community members and to prevent any possible exposure to COVID-19, families traveling during the 14-day period before the opening of school on August 25 will be required to quarantine for 14 days upon return. Instruction for these students will be delivered through the Blended Learning Plus program. The Phase III communication in August will provide additional guidance concerning family trips during the school year.



## Health and Safety at Home

The school will provide comprehensive communication to parents to inform them of health and safety protocols necessary to protect the health of all community members. The school encourages families in the strongest possible way to follow all guidelines in order to limit exposure for themselves and their children, both at home and in the community.



Specifically, we expect families to:

- wear masks and follow social distancing guidelines when in public,
- avoid large group events in the community and in the home, thus limiting risk of exposure to COVID-19 and other communicable illnesses, and
- limit social contact to only trusted family members.

## Health and Safety Communication

If a member of the MSR community (student, faculty, staff, parent) is exposed or diagnosed with COVID-19, the school will coordinate with the NC Department of Health and Human Services. Following government regulations concerning patient confidentiality, MSR will notify the school community about a confirmed case within the school and the individual cohort or bubble. The DHHS will direct the school, through the use of contact tracing, as to who must be quarantined for up to 14 days. If negative COVID-19 test results are returned earlier than 14 days, the individual may return to campus at that time by providing a physician's clearance letter. Community members who are quarantined will receive academic instruction via the Blended Learning Plus model until they may safely return to campus for instruction. MSR may amend the protocols set forth in this re-entry plan in response to new research, data, and guidance.

# COVID-19 EXPOSURE PROTOCOL

**IF A STUDENT OR EMPLOYEE HAS COVID-19 SYMPTOMS OR HAS HAD A KNOWN EXPOSURE TO SOMEONE DIAGNOSED WITH COVID-19**

**STEP 1**

The individual should not come to school or will be sent home immediately.

**STEP 2**

Before returning to school, the individual is required to either:

- have a COVID-19 test which shows a negative result
- present a note from a board-certified physician stating that the symptoms are associated with a diagnosed non-COVID-19 condition and follow the required quarantine for that condition
- be symptom-free for 72 hours and provide documented clearance from a physician's office

**WHAT ABOUT EVERYONE ELSE?**

- The cohort group may continue in classes on campus.
- Siblings of the child or enrolled children of the employee should not continue to be on campus until a doctor's note or negative test can be provided.

**IF A STUDENT OR EMPLOYEE TESTS POSITIVE FOR COVID-19**

**STEP 1**

The school will notify the County Division of Public Health and the North Carolina Department of Health and Human Services.

**STEP 2**

The individual can return 14 days after testing positive for COVID-19, as long as they have been fever and symptom free for 72 hours without the use of fever reducing medications. A clearance document by a board certified physician is also required to return to school after a positive COVID-19 diagnosis or test.

**WHAT ABOUT EVERYONE ELSE?**

- The classroom or grade-level cohort group will be quarantined for 14 days and will shift to Blended Learning Plus.
- The classroom or grade-level cohort group can test for COVID-19 3 days after exposure and return prior to 14 days with negative COVID-19 test.
- Siblings of the child with COVID-19 or enrolled children of the employee with COVID-19 will be quarantined and will shift to Blended Learning Plus.
- All other siblings of students in the quarantine cohort group will be quarantined for 14 days and will shift to Blended Learning Plus. These children may return earlier, permitting the sibling exposed to COVID-19 tests negative 3 days after exposure.

COVID-19 symptoms include: Fever of 99.6F or higher, chills, cough, shortness of breath or difficulty breathing, fatigue, muscle or body aches, headache, new loss of taste or smell, sore throat, congestion or runny nose, nausea or vomiting, and/or diarrhea.

\*\*\* The CDC recently updated their guidance to state AT LEAST 10 days for quarantine with AT LEAST 24 hours with no fever without fever-reducing medication. MSR has determined to maintain the original guidance of 14 days for quarantine with 72 hours with no fever without fever-reducing medication to ensure all community members' health and safety.

# HEALTH AND SAFETY: MSR'S MULTI-LAYERED DEFENSE (CONT'D)

## Parent Partnership and Transparency

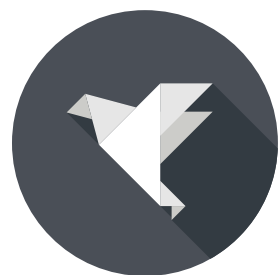
The health and safety of all members of the community rely on the good-faith communication and transparency of everyone. The Montessori School of Raleigh pledges to communicate to parents and families in a timely and transparent manner about possible exposure to COVID-19 and/or other illnesses. All members of the community rely on each family to communicate information to the school in a timely and transparent manner about any possible exposure to COVID-19 and/or other illnesses. The community relies on parents to faithfully keep their children home from school if they are exhibiting any medical symptoms to avoid exposing other individuals to illness. Only by collaborating and partnering together can we maintain the highest levels of health and safety for our children. Parents should communicate all student illnesses and possible exposure to or diagnosis of COVID-19 to the school nurse immediately by calling the school at 919-848-1545.



It is important to remember that COVID-19 symptoms are similar to symptoms of other common illnesses and viruses. It is important for us as a community to stay empathetic and supportive of each other. No one desires to become infected with the virus or chooses to contract it. Infection, however, can happen. If and when it does, we will follow our protocol, expect all in the community to extend grace and courtesy, and unite in moving forward.

## Counseling and Mental Health

Recognizing there will be different levels of comfort about returning to campus and navigating on-campus life, MSR has prepared extensive plans to support the community's well being throughout the 2020-2021 school year. Social-emotional curricula to support students will be delivered through classroom instruction, the Agility Lab and the Brier Creek Advisory Program.



# ACADEMIC PROGRAMS

## **Toddler and Children's Houses**

As we have shared previously, MSR is committed to keeping our Toddler/Children's House programs open, as we are considered a childcare facility offering an essential service for this level. The core academics will remain the same, but the Work Cycle will be modified to allow cleaning of materials between student use. Food preparation will be discontinued. Moreover, there will be a focus on personal hygiene and health education through Practical Life lessons. Students will also have designated work spaces in the classroom and use personal materials instead of communal ones. Outdoor learning spaces will be generously used. Interdisciplinary classes will continue while maintaining class cohort groups and may be delivered in different formats, based on scheduling.

## **Lower and Upper Elementary**

Regardless of mode of delivery, our skilled Montessori teachers will provide a full Montessori curriculum to students. The core academics will remain the same, but the Work Cycle will be modified to allow cleaning of materials between student use. Students also will have designated work spaces in the classroom and use personal materials instead of communal ones. Lessons will be taught in small cohort groups and individually, and students will continue to manage their own work plans and lesson practice. Added focus will be given to students' social development and to providing alternative opportunities for projects and activities. Interdisciplinary classes will also continue for these levels while maintaining class cohort groups and may be delivered in different formats based on scheduling.

## **Middle and Upper School**

The Middle and Upper School faculty is committed to delivering the complete MSR Academic and IB Diploma Programs this school year, through whichever delivery method is required. Students will study rich, diverse, and in-depth curricula in all academic subjects, including interdisciplinary courses, such as Physical/Health Education, Technology, Theater, Visual Arts, Music, Land and Livestock, Inquiry Skills, Leadership, Advisory, and College Counseling. The Middle and Upper School faculty will emphasize both academic and social-emotional development throughout all courses and programs. Particular focus is being given to providing engaging, experiential, and constructivist lessons in both On-Campus and Blended Learning environments.

# ACADEMIC PROGRAMS

## **Agility Lab**

Agility Lab support and instruction will continue while maintaining classroom cohort groups. It will be provided both virtually and within the classroom.

## **Early Bird, Encore and Studios**

At this time, we will provide after school child care. It is important that students are limited to their cohort groups and are not intermixing. We are continuing to finalize these plans as we review the data that has come in from the survey. We will have plans for Early Bird, Encore and Studios finalized by the Phase III communication in August. Please make sure to commit to Encore and other supplemental programs needed so we have an accurate count for staffing purposes.





# STUDENT LIFE AND ACTIVITIES

## Buses

Buses will pick up and operate on the same schedule as last year from both Lead Mine Campus and Southpoint Mall. Students will socially distance and must wear a mask while being transported on school buses. Bus capacity will be limited due to social-distancing requirements; therefore, there will be NO SINGLE DAY BUS DROP-INS permitted.



## Lunch and Snack

The My Hot Lunchbox program will be suspended for the beginning of the school year and may return when health conditions in our community improve. Therefore, parents will need to send all food and water necessary for the day with the student in personalized containers that students can easily open. Any utensils needed should also be packed for the child, and these should be cleaned daily at home. Parents will not have the option of having outside vendors deliver food to campus. Students will be asked not to share food, and all food preparations and food activities will be temporarily discontinued. Students will eat outside if possible or at their designated spaces in the classroom. Microwaves and refrigerators will not be available to reduce congregating and the spread of germs on surfaces.



## Outdoor Education

Outdoor education is an integral part of the Montessori curriculum and philosophy. Faculty will be taking students outdoors for class even more frequently than in previous years. The Re-Entry Task Force is researching the purchase of additional resources to facilitate more classes being held outdoors when weather and conditions permit.

## Field Trips and Extended Trips

Due to the constantly changing health conditions locally and in locations across the United States and around the world, we will discontinue field trips and extended overnight trips for the 2020-21 school





# STUDENT LIFE AND ACTIVITIES

year. In light of this change, faculty members are planning creative ways for all of our students to learn through experiential activities and transport themselves beyond the classroom and into new realms of understanding. If health conditions dramatically improve during the course of the school year to pre-COVID-19 levels of health and safety, the administration will reevaluate the possibility and logistics of trips.

## **Athletics**

MSR athletic programs will follow the guidelines of the North Carolina High School Athletic Association (NCHSAA) and our athletic conference, the Triangle Middle School Conference. The state has announced that Fall sports competitions and practices will not start until after September 1st. The possibility exists that school athletic competitions could be canceled for the Fall and Winter seasons. In the absence of competitive athletics, MSR foresees offering an after-school program focused on skills development and/or physical fitness.



## **Community Events**

MSR will move large community events, gatherings, and meetings to virtual platforms. Events that allow healthy social distancing of at least 6 feet between people, such as Garden Day, may be held following strict health and safety protocols. Parents should anticipate that parent-teacher meetings and student-led conferences will be held virtually via the Zoom conferencing platform.

## **Student Activities**

Virtual activities and events will be held in lieu of field trips, student assemblies, arts performances, school-wide parent meetings, pep rallies, etc. Should health conditions in the community improve during the school year, MSR will reevaluate and consider moving back to in-person events when health and safety can be maintained.

# CAMPUS FACILITIES

## Drop-Off and Pick-Up

**Lead Mine Campus:** Lead Mine drop-off and pick-up times will be staggered to avoid crowding at entry and exit doors on campus. Reasonable accommodations will be made to help coordinate arrival and dismissal times for children in the same family or carpool and in early morning or afterschool programs. Phase III communication arriving in August will provide detailed information for this topic.

**Brier Creek Campus:** Brier Creek Campus will not need to utilize staggered start and end times, due to the availability of two drop-off locations on campus, and there will be no change to the start and end times for the Brier Creek Campus. Drop-off will be from 7:45–8:00 a.m. for both MS and US school students. Pick-up will run from 3:10–3:25 p.m. for all students. The Middle and Upper School schedule promptly begins at 8:00 a.m. and ends at 3:10 p.m. each day, the same times as last school year.

## Cleaning and Sanitizing

Tom Thomas, Director of Buildings and Grounds, and his staff have been preparing for the opening of school for several months, and a well-articulated cleaning and sanitizing plan is now in place. Additional staff have been hired, and they will disinfect classroom materials and surfaces with the **Clorox Total 360® electrostatic sprayers** nightly. There are also new intensive disinfecting guidelines that our cleaning crews are following closely. Additionally, the school is providing hand sanitizing stations and proper disinfecting solutions and cleaning materials for use by faculty and staff. Bathrooms and common spaces will be cleaned and disinfected on a regular schedule throughout the school day.



# CAMPUS FACILITIES

## Air Filtration

The filters in each classroom have been upgraded to MERV 8. In addition, air will be circulated nightly throughout the buildings, and faculty will be encouraged to open windows and doors when weather conditions permit. **Additionally, MSR is proud to announce that the school has begun the installation of needlepoint bipolar ionization technology to the HVAC systems of all school buildings on both campuses.** In scientific testing, this cutting-edge technology demonstrates **a 99.4% reduction rate of SARS-CoV-2 (COVID-19) on surfaces within 30 minutes.**



## Playgrounds

Student cohort groups will utilize playgrounds on a rotation with at least 34 minutes between groups. The CDC does not currently recommend disinfecting playgrounds, wood structures or other outdoor surfaces as it has not been proven to reduce the risk of COVID-19.

## Building Traffic Patterns

All doors, hallways and stairs will be designated for one-way traffic in buildings to facilitate effective physical distancing. Traffic flow along sidewalks and across campus grounds will also have one way traffic patterns. All community members will be expected to follow signs and directional arrows to navigate on campus. Social-distancing markers will be located outside building and classroom doors. Additionally, all classrooms will designate one entrance and one exit from the room. Phase III communication will include campus maps illustrating traffic patterns.

# THANK YOU

## Deepest Appreciation to the Task Force

The Re-Entry Task Force, charged with developing the plans, protocols, and guidelines needed to reopen the school for this fall, began meeting in early May 2020 under the leadership of then Interim Head of School, Jeannie Norris. The Sub Committees of the Task Force have collectively read hundreds of articles and policy statements from government agencies, health organizations, and educational institutions and consulted with physicians, epidemiologists, and other health experts in order to gain a thorough understanding of the issues and design a comprehensive approach to mitigating risk. These heroes have worked countless hours throughout the summer, not only to create the Re-Entry Plan but also to develop the school's comprehensive protocols and policy manual that encompasses even greater detail than presented in school communications to families.

We extend our deepest appreciation to all of the faculty and staff listed below for their superb leadership in preparing the school for the fall and thank them for the work they will continue to do between now and August 25 to ensure our readiness to welcome students back to MSR.

### Task Force Subgroup A

Alicia Martin  
Aubrie Hile-Hoffer  
Caroline Farrell  
Courtney Nutter  
Emily Johnston  
James Taylor  
Jeannie Norris  
Marian Godwin  
Mark Kolman  
Monica Rodriguez  
Rose Barnett  
Shelby Coury

### Task Force Subgroup B

Aubrie Hile-Hoffer  
Brant Morris  
Beth Ryan  
Courtney Nutter  
Donna Boyd  
Emily Johnston  
Greg Dahlin  
James Taylor  
Jeannie Norris  
Kim Wimpey  
Laura Morrison  
Lauren Anderson  
Mark Kolman  
Melissa Edwards  
Monica Rodriguez  
Nancy Melamed  
Nora Ostler  
Rose Barnett

### Task Force Subgroup C

Aubrie Hile-Hoffer  
Caroline Farrell  
Hali Strykowski  
James Taylor

Jeannie Norris  
Krystin Knox  
Kaley Mansour  
Monica Rodriguez  
Nora Ostler  
Stephanie Henderson  
Tresa Pickup

### Task Force Subgroup D

Aubrie Hile-Hoffer  
Alicia Martin  
Ellen Boswell  
Emily Johnston  
Fran Strombotne  
James Taylor  
Jen Bitner  
Jeannie Norris  
Kate Falkiner  
Lindsay Van Loon  
Mark Kolman  
Kaley Mansour  
Monica Rodriguez  
Stephanie Henderson  
Tresa Pickup

### Task Force Subgroup E

Amanda Rugh  
Aubrie Hile-Hoffer  
Andrew Beaver  
Alec Campbell-Barner  
Babe Clawson  
Cathy Adams  
Cathy Bocklage  
Courtney Nutter  
Emily Johnston  
Greg Peele  
James Taylor  
Jeannie Norris  
Kaley Mansour

Kathleen Kelly  
Kelli Alvater  
Mary Anna Arnold  
Monica Rodriguez  
Nancy Melamed  
Tom Thomas

### Task Force Subgroup F

Aubrie Hile-Hoffer  
Alicia Martin  
Caroline Farrell  
Cameron Poole  
Cathy Bocklage  
Emily Johnston  
Justine Ulrey  
Kaley Mansour  
Karen Richards  
Lauren Anderson  
Leisa Guvetis  
Michelle Gilchrist  
Stephanie Henderson  
Tom Thomas

### Task Force Subgroup G

Alicia Martin  
Amanda Rugh  
Aubrie Hile-Hoffer  
Caroline Farrell  
David Hughes  
Ellie Cook  
Jeannie Norris  
Kate Falkiner  
Marian Godwin  
Melissa Edwards  
Monica Rodriguez  
Ruthanne Walker  
Stephanie Henderson  
Tresa Pickup  
Wendy Peele

# QUESTIONS?

Monica Rodriguez  
Head of School  
[mrodriguez@msr.org](mailto:mrodriguez@msr.org)

Aubrie Hile-Hoffer  
Lower School Director  
[ahilehoffer@msr.org](mailto:ahilehoffer@msr.org)

Caroline Farrell  
Director of Enrollment Management  
[cfarrell@msr.org](mailto:cfarrell@msr.org)

David Hughens  
Director of Marketing and Communications  
[dhughens@msr.org](mailto:dhughens@msr.org)

James Taylor  
Middle and Upper School Director  
[jtaylor@msr.org](mailto:jtaylor@msr.org)

Marian Godwin  
Director of Development  
[mgodwin@msr.org](mailto:mgodwin@msr.org)

Suzanne Baumgarten  
Interim Director of Finance and Operations  
[sbaumgarten@msr.org](mailto:sbaumgarten@msr.org)

Tom Thomas  
Director of Buildings and Grounds  
[tthomas@msr.org](mailto:tthomas@msr.org)

Tracia Mills  
School Nurse  
[schoolnurse@msr.org](mailto:schoolnurse@msr.org)





# The Montessori School *of* Raleigh

## RE-ENTRY PLAN COMMUNICATION



|                  |               |  |
|------------------|---------------|--|
| <b>PHASE I</b>   | COMMUNICATION | Released July 2  |
| <b>SURVEY</b>    | COMMUNICATION | Released July 17 (Survey about Blended Learning Plus, busing and Encore) |
| <b>PHASE II</b>  | COMMUNICATION | July 29  |
| <b>PHASE III</b> | COMMUNICATION | August   |



*We are grateful to Grandview Preparatory School in Boca Raton, Florida for granting us permission to use style and conceptual elements from the superb Re-Entry Plan Grandview prepared for its families.*