



The Montessori School *of* Raleigh

RE-ENTRY PLAN PHASE I, II & III

2020-21



RE-ENTRY PLAN

PHASE I, II & III

Table of Contents

PHASE I (July 2)	4
Intro and Accreditations	5
Re-Entry Planning	6
On-Campus Learning	7
Blended Learning	8
Blended Learning Plus	9
Plan for Toddler, Children's House and Encore	10
Plan for Elementary through Upper School	11
Montessori Real-Life Learning	12
Digital Platforms	13
Layered Defenses and Life on Campus	14
Life on Campus	15
What Does Tuition Cover?	16
PHASE II (July 29)	17
The Montessori School of Raleigh Mission, Philosophy and Community	18
Health and Safety: MSR's Multi-Layered Defense	19
Health and Safety Decision Making, Daily Health Screenings and Health Monitoring, Medical Professional on Campus, Handwashing and Hygiene, Face Masks, Social Distancing, Student Cohorts, Campus Visitors, Health and Safety Education Program, Family Travel, Health and Safety at Home, Health and Safety Communication	
COVID-19 Exposure Protocol	23
Health and Safety: MSR's Multi-Layered Defense (Cont'd)	24
Parent Partnership and Transparency, Counseling and Mental Health	
Academic Programs	25
Toddler and Children's House, Lower and Upper Elementary, Middle and Upper School, Agility Lab, Early Bird, Encore and Studios	
Student Life and Activities	27
Buses, Lunch and Snack, Outdoor Education, Field Trips and Extended Trips, Athletics, Community Events, Student Activities	
Campus Facilities	29
Drop-Off and Pick-Up, Cleaning and Sanitizing, Air Filtration, Playgrounds, Building Traffic Patterns	
Thank You	31
Questions	32
PHASE III (August 21)	33
Intro	34

(Continued on the next page)

RE-ENTRY PLAN

PHASE I, II & III

Table of Contents (Cont'd.)

Calendar and Events	35
Academic Calendar	36
Communications	37
Veracross Health Form	39
Student/Parent COVID Protocol Pledge	40
Travel	38
Parking Lot/Carline/Foot Traffic Procedures	39
Class Sizes	45
Early Bird/Encore Specifics	46
Blended Learning Plus	47
Busing Protocols	50
Athletics	51
Other Programs	52
Re-Entry Plan Communication	53

PHASE I



RE-ENTRY PLAN

Grounded in mission and rooted in the legacy of 45 years of exemplary Montessori teaching, MSR looks forward to reopening our campuses in the fall and to the growth and progress another year will bring. This Re-Entry Plan is designed with the safety and well-being of all in our community as the highest priority.



KEY

T/CH	Toddler/Children's House
LE	Lower Elementary
UE	Upper Elementary
MS	Middle School
US	Upper School

“Adaptability – this is the most essential quality...”

— Dr. Maria Montessori
From Childhood to Adolescence

Campus Opens August 25

RE-ENTRY PLANNING

The Process

MSR has established a Ramp-Up Task Force comprised of the seven Subgroups shown below, each working on a distinct task related to reopening the school in the fall. Across all subgroups, the goal is to create a re-entry plan that prioritizes the safety and wellness of our students and employees, ensures an effective delivery of the Montessori and International Baccalaureate programs, and offers families and the school the flexibility needed in these uncertain times.

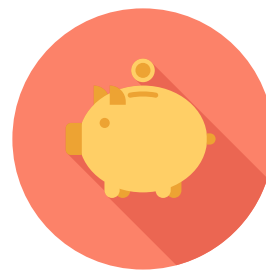
We plan to reopen for on-campus learning as originally scheduled on August 25, as outlined in the [Academic Calendar](#). As we have done in recent years, arrivals will be staggered across a number of days to provide time to orient students new to MSR and students moving to a new grade. The following Flow Charts, one for Toddler/Children's House parents and one for Lower Elementary through Upper School, present the decision paths we will use, as well as entry options for families.



Opening Day



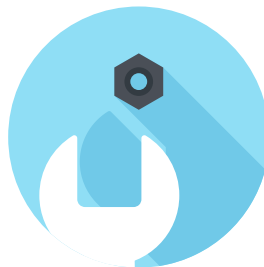
Program Delivery



Business



Health & Safety



Campus Facilities



Academic Programs

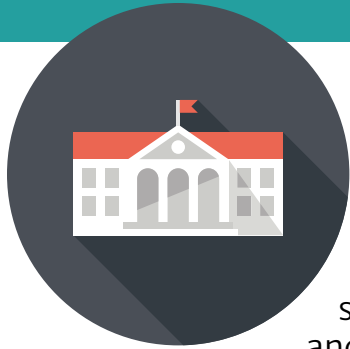


Communications

The Definitions

The following pages provide more details about On-Campus Learning, Blended Learning and Blended Learning Plus.

ON-CAMPUS LEARNING



We are planning for on-campus school operations to resume in the fall. The community will follow rigorous hygiene and safety protocols that reflect guidance from the CDC, OSHA, EPA, and NC Department of Health and Human Services, our national and regional independent school associations (NAIS, NCAIS), local consulting health professionals, and our school nurse.



Daily drop-off and pick-up times will be staggered to reduce the number of people congregating.



Athletics offerings will be determined by NCHSAA recommendations and requirements.



Encore will be offered. After School Studios have been suspended.



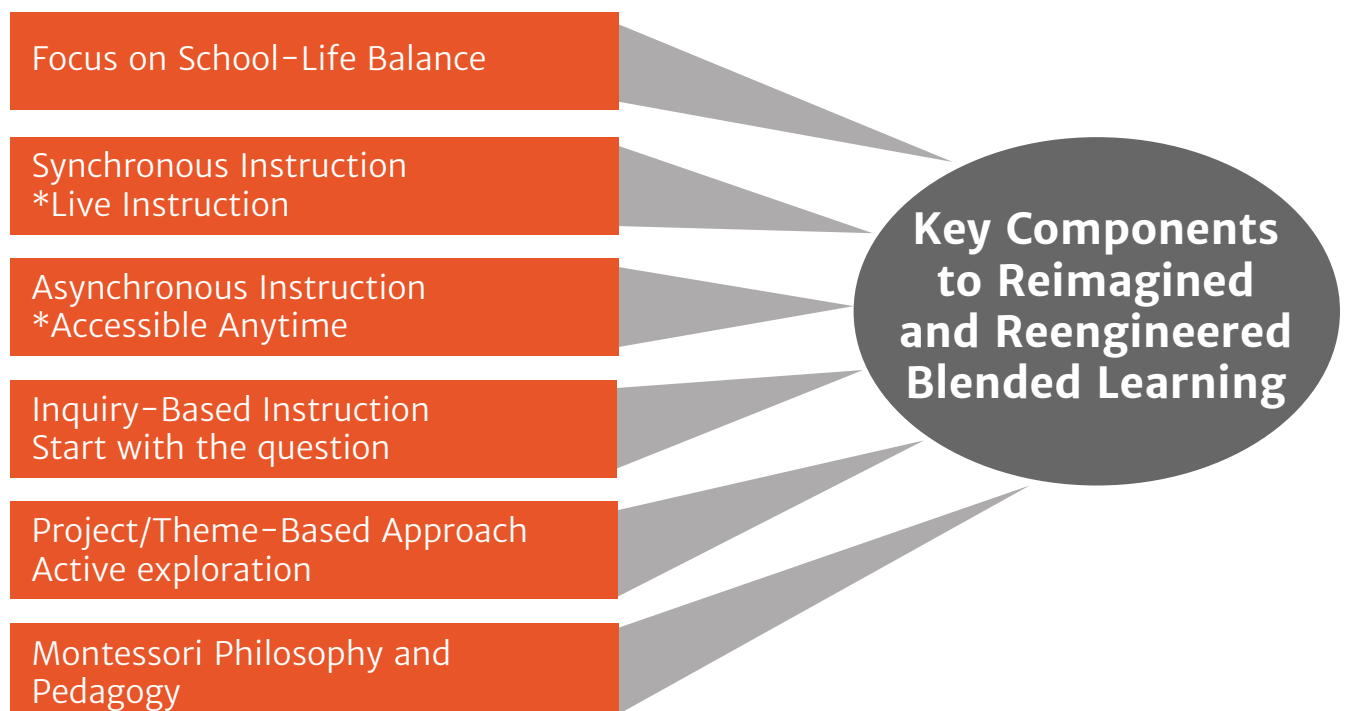
BLENDED LEARNING



We are planning for waves of interruption given predictions about a second wave of COVID-19. Should that occur, we will pivot to Blended Learning, a *reimagined* and *reengineered* virtual instructional approach.

When we left our campuses on March 13, we pivoted to Emergency Virtual Learning in response to a global emergency. **We are no longer in reactive mode.** We have analyzed the lessons, tools, techniques, and software we used from March through the end of the year and selected those that were most effective. Over the past several weeks, we have consulted with experts, and twenty of our faculty have engaged in intensive professional development to learn from leading virtual-learning authorities around the country on topics ranging from theme-based instruction and project-based learning in a virtual setting to best practices in pacing the flow of the instructional day and in fostering social-emotional learning and community building. We have refined our industry-leading approach to ensure innovative and effective continuous learning regardless of mode of delivery.

During the recent Emergency Virtual Learning period, MSR distinguished itself in the delivery of full academic and social-emotional curricula, blending synchronous with asynchronous instruction and enhancing the learning experience with initiatives to build community and connection. At the heart of our success is our Montessori philosophy: we guide students to become resilient, self-directed, collaborative, intrinsically motivated, and adaptable. These are precisely the skills that make it possible for our students to excel in a virtual setting.

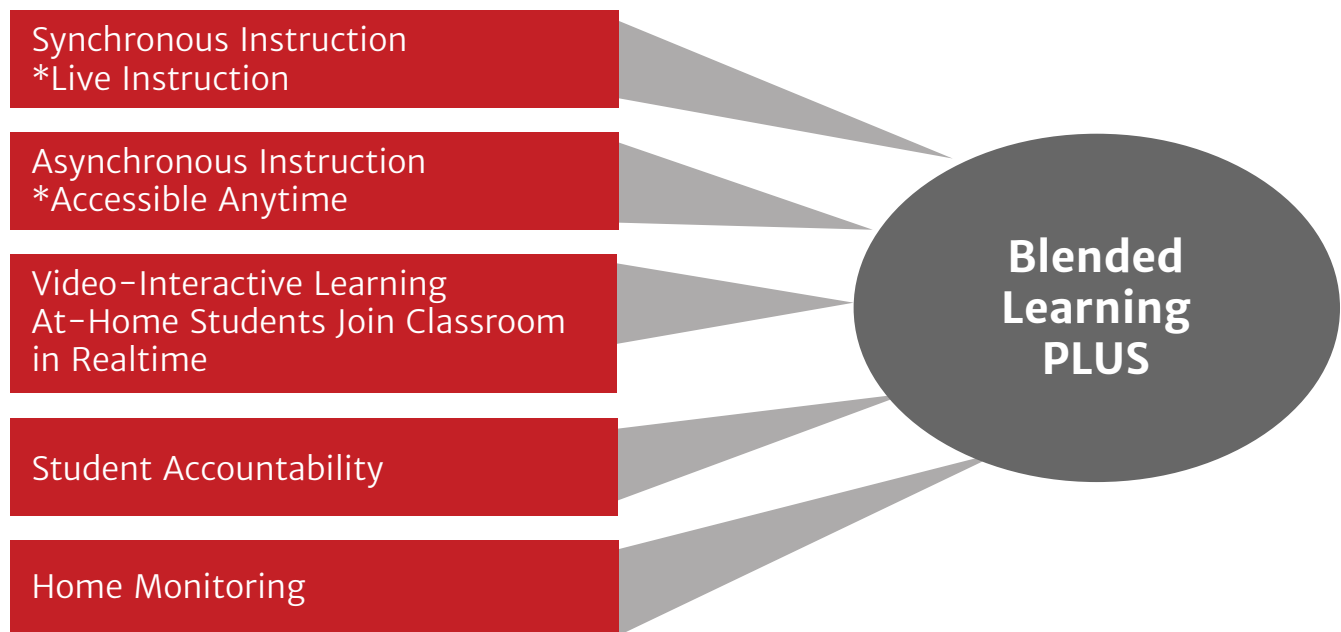


BLENDED LEARNING PLUS



As educators we know that in-person, place-based teaching creates the most effective learning because of the ease with which we create a natural flow of interactive and collaborative synergy. In these uncertain times, however, we understand that some families may not be ready to have their child on campus. For those families we are making accommodations by offering Blended Learning Plus, a blend of synchronous (live instruction), asynchronous (accessible anytime), and video-interactive learning (students at home joining the classroom on campus through video-conferencing), with regular modifications to ensure a well-balanced curriculum with both academic and social-emotional focus. The formula for the “blend,” i.e., the proportion of each approach, varies by age and level. Synchronous and asynchronous will be used primarily in LE and UE classes, with students at home joining in community meetings and other group activities; asynchronous and video-interactive will be used primarily for MS and US students.

Blended Learning Plus requires students to be self-directed, organized, responsible, and accountable for their academic success and requires parents to assume some responsibility for their child’s learning.



FLOW CHART

PLAN FOR TODDLER, CHILDREN'S HOUSE AND ENCORE

We recognize that the needs of young children require significant supervision and support to facilitate their learning. We therefore plan to prioritize sustaining the on-campus experience for T/CH students even if we pivot to Blended Learning (synchronous and asynchronous) for the Elementary, Middle, and Upper School divisions. We recognize, however, that some families may not be comfortable with their child returning to campus. Blended Learning Plus will be an option for these families.

In consultation with MSR's Ramp-Up Reopening Task Force, medical professionals, and local officials, MSR is prepared to execute the physical campus modifications and health and safety protocols needed to support students safely returning to campus.

YES

The State of North Carolina and local governments have lifted the stay-at-home orders for childcare facilities. (Given the critical service pre-school programs provide to working parents, we believe it is likely that these programs will be allowed to remain open even if programs for school-age children are ordered to shift to remote instruction.)

NO

YES

[CLICK HERE FOR SPECIAL COVID TRPP](#)

As a family you have determined that you are comfortable with your child returning to physical campus.

YES

ON-CAMPUS LEARNING

Your child begins the 2020-21 academic year physically distanced on campus and adhering to required health and safety protocols. Should shut-down orders result in students LE through US not being on campus, physical distancing on campus for T/CH can be expanded, thus further lowering student-teacher ratios.

NO

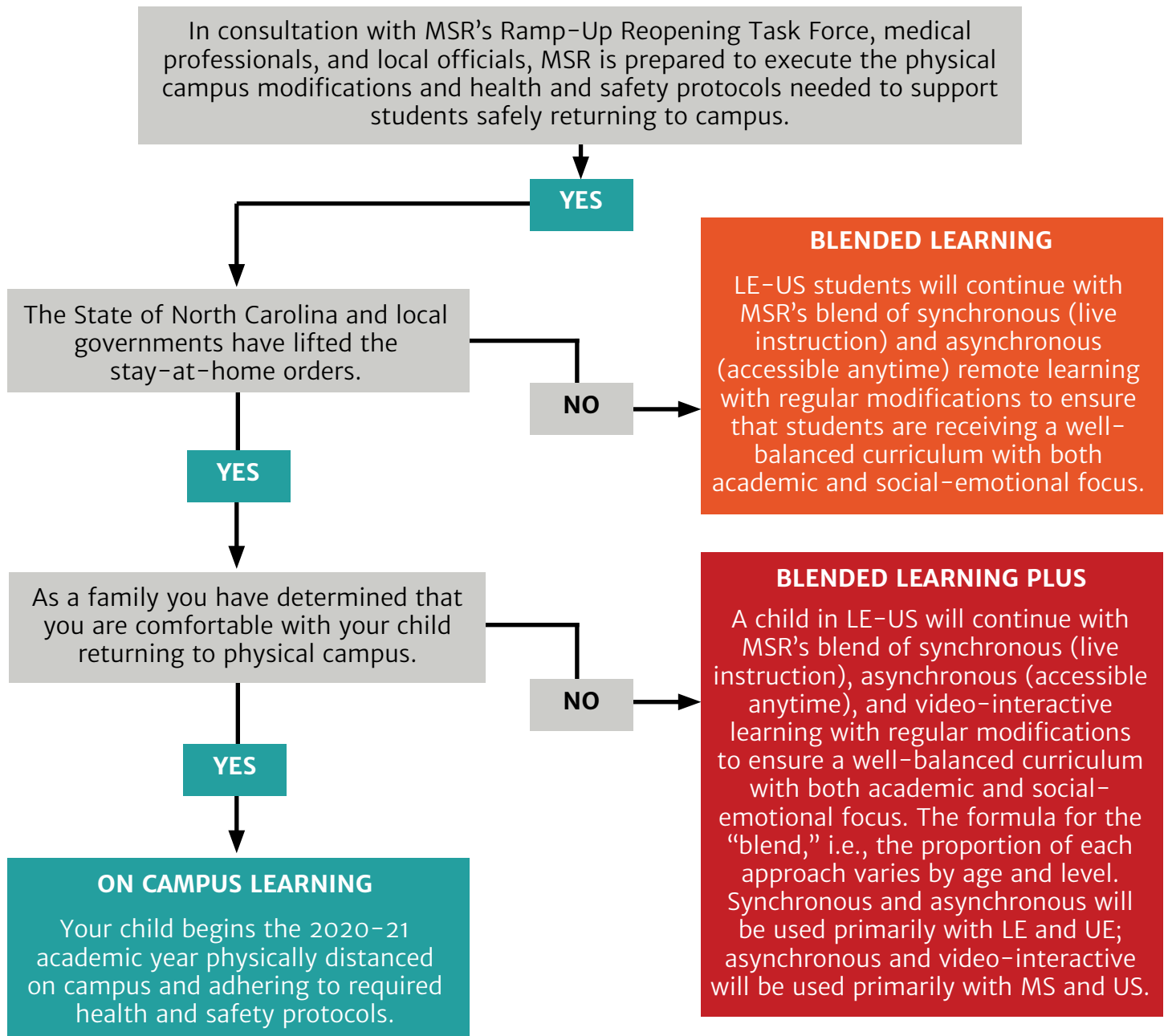
BLENDED LEARNING PLUS

Your child receives instruction through synchronous (live instruction) and asynchronous instruction (accessible anytime). One-on-one touch point opportunities are provided weekly by teachers, both for students and for parents. Prepackaged material kits are provided to encourage your child's independence and reduce the time commitment for you.

FLOW CHART

PLAN FOR LOWER ELEMENTARY THROUGH UPPER SCHOOL

The campuses are scheduled to reopen on August 25 unless authorities require us to move to Blended Learning. MSR is fortunate to have spacious teaching and learning spaces both indoors and outdoors, and we have confirmed that all students can fit comfortably on the campuses with ample physical distancing. Therefore, should public schools cease in-person operations due to the inability to physically distance, MSR would continue to deliver on-campus instruction.



ON-CAMPUS/BLENDED LEARNING/LEARNING PLUS AND MONTESSORI REAL-LIFE LEARNING



School is meant to prepare students for each advancing step toward success in college and, ultimately, life. But a child's school years are much more than just preparation for "real life." They *are* real life, and the ways in which our students learn and live today, in a global-pandemic world, shape the people they will become tomorrow. Montessori students succeed because every day they are learning how to cope, adapt, and thrive.

Resilient

Self-Directed

Intrinsically Motivated

Collaborative

Adaptable

Critical Thinkers

**Key
Competencies
in Montessori
Learners**



DIGITAL PLATFORMS



Our Director of Educational Technology researches and tests the industry-standard digital products so we can integrate the best platform options to provide the most seamless delivery of our program virtually or in person.



Veracross is our primary portal for student and family information, grades, calendars, announcements, and more. Parents and students can access their Veracross accounts through msr.org.



Google Classroom, a Learning Management System, will be utilized for assignment management, videos, and class announcements. Students can also turn in their work on that platform.



Zoom is a robust video conferencing tool that we will use for synchronous (live) class meetings and instruction.



Google Meet is another video meeting tool that can also be used for synchronous large- and small-group connections.



Loom will be our vehicle for sharing asynchronous screencasts and instructional videos with students.



ManageBac is the leading IB learning management system (LMS) for planning, assessment and reporting. This system empowers MSR faculty to design and integrate vertically aligned Montessori and IB curricula in grades 7 through 12.

LAYERED DEFENSES AND LIFE ON CAMPUS



With information and guidance from public health agencies, we have developed strategies in alignment with best practices to mitigate risk to our students and employees. Protocols include the following:



Daily screenings and temperature checks for all students and employees



Traffic patterns, foot and driving, designed to physically distance



Establishing “bubbles,” i.e., learning cohorts of students and teachers who stay together throughout the day, thus reducing exposure and facilitating contact tracing



Parents and visitors will not be permitted in buildings



Students will bring lunches and snacks; we will discontinue delivery of food to campus



Medical personnel will be on campus



Staggered schedule for drop-off and pick-up



All students from LE through US, all employees, and parents dropping off and picking up students will be required to wear masks



The potential to suggest all students and families to limit travel two weeks before the start of school to avoid exposure



Athletic options will be determined by NCHSAA



Enhanced cleaning with equipment specifically designed to sanitize surfaces; increased air filtration



Outdoor spaces will be utilized to full potential

LIFE ON CAMPUS



Despite global uncertainty, we know with certainty that students learn best in a community of caring adults who know them and understand their needs. Even as we physically distance, wear masks, wash hands, avoid large groupings, and meet in cohorts, learning continues. Children and adolescents grow academically, socially, and emotionally and move steadily forward to become agile thinkers, poised communicators, gracious collaborators, and engineers of their own authentic and fulfilling lives.



Ideal Student/Teacher Ratio



Traditions of Celebrating Success



Social-Emotional Learning



Gold Standard Curricula—Montessori and International Baccalaureate



Outstanding Early Childhood Program



Athletics and Physical Activity



Student Life Curriculum



Experiences in the Arts

WHAT DOES TUITION COVER?



Tuition covers approximately 85% of the school's operating budget and pays for continuity of learning and community, which exists on and off campus. We have been fortunate to have the resources needed to provide a robust virtual learning experience.

Facilities

These expenses remain with slight modification regardless of mode of instruction

- Maintenance and Cleaning
- Repair and Replacement
- Supplies and Equipment

Educational Instruction

- Educational Technology
- Library Materials
- Academic Resources
- Athletic Equipment
- Drama, Music, and Art Supplies

Financial Aid

- Financial aid is essential for expanding access to a broad range of families seeking the benefits of a Montessori education
- Special COVID-19 Relief Fund

Operations & Infrastructure

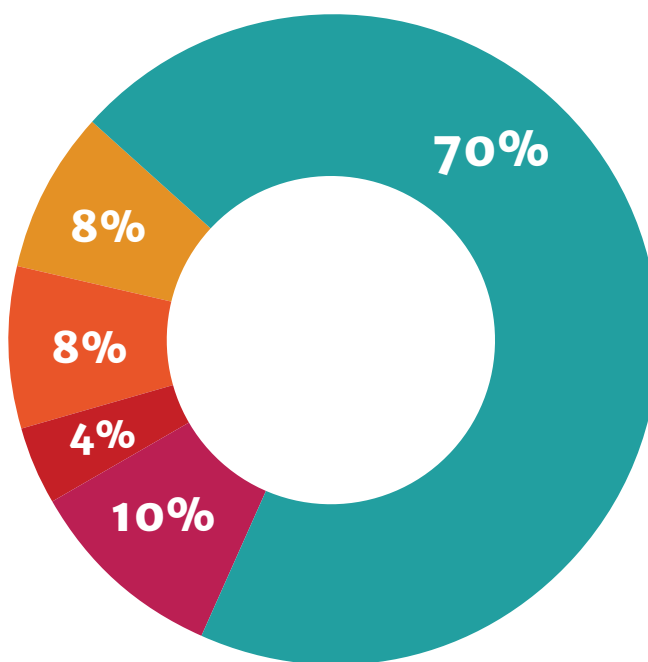
These expenses remain regardless of mode of instruction

- Business Expenses
- Utilities
- Insurance
- Memberships
- Accreditations
- Professional Development
- Technology
- Transportation
- Mortgage Payments

Human Resources

Teachers and staff to support and implement the development and delivery of curriculum

- Instructional Methodology
- Social-Emotional Learning
- Social-Emotional Support
- Arts/Athletics/Clubs
- Leadership Opportunities
- Community and Student Life
- College Planning and Counseling
- Learning Support and Accommodations



The remaining 15% of expenses the school incurs annually is covered by The MSR Annual Fund and by auxiliary programs, e.g., SummerScape and Encore. We are grateful for the extraordinary generosity of MSR parents this year. Our parents' generous gifts, including those made as donations of SummerScape and Encore fees, played a large role in boosting the 2019/2020 MSR Annual Fund to a historic high in the midst of COVID-19. The MSR Annual Fund is critical to the success of the school and the delivery of a robust virtual program.

To review the modified COVID-19 Tuition Payment Plans, [please use this link](#).

PHASE II



THE MONTESSORI SCHOOL OF RALEIGH MISSION, PHILOSOPHY AND COMMUNITY

Mission

The Montessori School of Raleigh is the Triangle's modern embodiment and mindful practice of the time-proven Montessori philosophy, developing agile thinkers, poised communicators, and gracious collaborators—engineers of authentic and fulfilling lives.

Grounded in mission and the efficacy of the Montessori and IB curricula and buoyed by the remarkable strength in this community, we are going to extraordinary lengths to make everyone's health and safety our first priority as we open a new school year. In this Re-Entry Plan Phase II, we explain in detail protocols, approaches, and expectations.

Our success in keeping everyone as free from risk as possible depends in large part on the cooperation of all in the community. Our guidelines are clear. We are prepared and committed to teaching all community members to adopt and practice new habits and behaviors. We will model best practices in health, personal hygiene, and safety and will expect that everyone in the MSR community will take all precautions to protect themselves and others.



There is an old Irish proverb, “In the shelter of each other the people live.” Our opportunity during this world crisis is to prove that the power of community sustains us as we all contribute fully to the common good.

Campus Opens August 25

HEALTH AND SAFETY: MSR'S MULTI-LAYERED DEFENSE

Health and Safety Decision Making

MSR's decisions for health and safety are based on science, research, and data. We look to government agencies, such as the Center for Disease Control (CDC), American Academy of Pediatrics, North Carolina Department of Health and Human Services (NCDHHS), World Health Organization (WHO), and health officials to guide us. In addition, we have a strong partnership with the North Carolina Association of Independent Schools (NCAIS), the American Montessori Society (AMS), the International Baccalaureate Organization (IBO), the National Association of Independent Schools (NAIS), and other educational organizations, all of which have generously shared guidance. We have used all of these resources to design the following plan. Further, we are committed and fully prepared to execute our plan and will expect parents to follow through on this critical partnership.

Daily Health Screenings and Health Monitoring

Parents will perform a health check for each of their students every morning at home before departing for school. Parents will keep students home who are experiencing any of the following symptoms:



• Fever of 99.6°F or higher	• Shortness of breath or difficulty breathing	• Muscle or body aches
• Chills	• New loss of taste or smell	• Congestion or runny nose
• Cough	• Sore Throat	• Nausea or vomiting
• Fatigue	• Diarrhea	• Headache

Students may return to on-campus learning after 72 hours without symptoms and with documented clearance from a physician's office. Siblings will stay home as well and may return at the same time as the child with symptoms. Students with allergies that cause symptoms similar to COVID-19 will need a doctor's note on file with the school nurse.

Student temperatures will be checked by faculty and staff as car riders exit their vehicles. Student temperatures will also be checked before students are permitted to board MSR school buses each morning. Any student with a temperature above 99.6 degrees will be required to return home. If a student's initial temperature reading shows an elevated temperature, staff will test again with a different device to ensure accuracy. Additionally, the school nurse and faculty will conduct temperature and oxygen saturation spot checks during the school day to bolster early detection of any students developing symptoms of illness.

HEALTH AND SAFETY: MSR'S MULTI-LAYERED DEFENSE

Medical Professional on Campus

The Montessori School of Raleigh has hired a full-time school nurse to provide medical expertise to our school. The school nurse will manage and oversee student and staff health on campus, administer health screenings, administer medications, provide first aid and patient care, oversee the implementation of student health plans, provide health guidance to administration and faculty, implement and oversee faculty health and safety training, oversee the purchasing of health care supplies, triage injuries and illness, collect and oversee medical documents, process doctors notes/clearances, manage and administer EpiPens®, and handle all parent medical communications for the school. Additionally, the school nurse will oversee the management of the school Health Centers, which are located on both the Lead Mine Campus and the Brier Creek Campus.



Handwashing and Hygiene

Handwashing education will be an integral component of our MSR health and safety curricula. Handwashing for students and faculty will occur at regular intervals throughout the day and at additional times as needed. Hand sanitizers will be available at classroom doors and at the entrances and exits of buildings.

Face Masks

All students in Children's House through Grade 12, as well as all faculty and staff, will be required to wear masks on campus at all times. Students are required to have a clean face mask for each day and additional masks as directed by each level. Students will wear masks outside, as they sometimes have trouble maintaining physical distance. We will provide students the opportunity to take scheduled mask-breaks outdoors following physical distancing guidelines. Students will learn recommended protocols for putting on and removing a mask safely.



Physical Distancing

Due to our spacious campus and large classrooms, MSR has plenty of space for all students to return to campus and safely learn while physically distancing. Student workstations and desks will be distanced six feet or more from each other. Students will receive comprehensive instruction on maintaining physical distance in classrooms, hallways, sidewalks, outdoor education spaces, etc.



HEALTH AND SAFETY: MSR'S MULTI-LAYERED DEFENSE

Student Cohorts

On both campuses students will be taught in cohort groups or bubbles to reduce the number of individuals with whom they come in contact on a daily basis. On the Lead Mine Campus student cohorts are assigned by classroom and teacher. For example, Lower Elementary I students will only interact with students and teachers assigned to that classroom; they will not come in contact with students and teachers in other classrooms on campus. On the Brier Creek Campus student cohorts will consist of students in the same building or division. Students from the Middle School and Upper School will not take classes together or be in the same occupations, activities, intersessions, athletics, etc. Brier Creek students will follow their normal class schedule and move from classroom to classroom following the campus physical distancing traffic plan.



Campus Visitors

Parents, visitors, and outside vendors will not have access to MSR buildings and classrooms to maintain the health protections afforded by the student cohort groups. When appropriate, and while at school, students may receive educational support services virtually.



Health and Safety Education Program

The faculty, in consultation with medical professionals, has developed a comprehensive student health and safety education program for all school levels and divisions. Students will receive health and safety lessons in all classrooms, from every teacher, in each course, including physical and health education and other interdisciplinary classes. The first month of the school year will include frequent and in-depth lessons to firmly internalize and habituate healthy routines and knowledge students. Lessons and activities to reinforce these skills will occur at regular intervals throughout the school year, especially when returning to campus from a period of Blended Learning. Teachers have designed experiential, hands-on lessons and activities that will engage students through multiple learning styles and modes.



HEALTH AND SAFETY: MSR'S MULTI-LAYERED DEFENSE (CONT'D)

Family Travel

In light of the increasing number of COVID-19 infections both within and outside the state, we strongly discourage all non-essential domestic and international travel 14 days prior to the start of the school year. We understand family and professional obligations may require you to travel outside of North Carolina within that period. In order to maintain the safety of all community members and to prevent any possible exposure to COVID-19, families traveling during the 14-day period before the opening of school on August 25 will be required to quarantine for 14 days upon return. Instruction for these students will be delivered through the Blended Learning Plus program. The Phase III communication in August will provide additional guidance concerning family trips during the school year.



Health and Safety at Home

The school will provide comprehensive communication to parents to inform them of health and safety protocols necessary to protect the health of all community members. The school encourages families in the strongest possible way to follow all guidelines in order to limit exposure for themselves and their children, both at home and in the community.



Specifically, we expect families to:

- wear masks and follow physical distancing guidelines when in public,
- avoid large group events in the community and in the home, thus limiting risk of exposure to COVID-19 and other communicable illnesses, and
- limit social contact to only trusted family members.

Health and Safety Communication

If a member of the MSR community (student, faculty, staff, parent) is exposed or diagnosed with COVID-19, the school will coordinate with the NC Department of Health and Human Services. Following government regulations concerning patient confidentiality, MSR will notify the school community about a confirmed case within the school and the individual cohort or bubble. The DHHS will direct the school, through the use of contact tracing, as to who must be quarantined for up to 14 days. If negative COVID-19 test results are returned earlier than 14 days, the individual may return to campus at that time by providing a physician's clearance letter. Community members who are quarantined will receive academic instruction via the Blended Learning Plus model until they may safely return to campus for instruction. MSR may amend the protocols set forth in this re-entry plan in response to new research, data, and guidance.

COVID-19 EXPOSURE PROTOCOL

IF A STUDENT OR EMPLOYEE HAS COVID-19 SYMPTOMS OR HAS HAD A KNOWN EXPOSURE TO SOMEONE DIAGNOSED WITH COVID-19

STEP 1

The individual should not come to school or will be sent home immediately.

STEP 2

Before returning to school, the individual is required to either:

- present a note from a board-certified physician stating the symptoms are associated with a diagnosed non-COVID-19 condition and follow the required quarantine for that condition
- be symptom-free for 72 hours and provide documented clearance from a physician's office

WHAT ABOUT EVERYONE ELSE?

- The cohort group may continue in classes on campus.
- Siblings of the child or enrolled children of the employee should not continue to be on campus until a doctor's note.

IF A STUDENT OR EMPLOYEE TESTS POSITIVE FOR COVID-19

STEP 1

The school will notify the County Division of Public Health and the North Carolina Department of Health and Human Services.

STEP 2

The individual can return 14 days after testing positive for COVID-19, as long as they have been fever and symptom free for 72 hours without the use of fever-reducing medications. A clearance document by a board certified physician is also required to return to school after a positive COVID-19 diagnosis or test.

WHAT ABOUT EVERYONE ELSE?

- The classroom or grade-level cohort group will be quarantined for 14 days and will shift to Blended Learning Plus.
- The classroom or grade-level cohort group can test for COVID-19 3 days after exposure and return prior to 14 days with negative COVID-19 test.
- Siblings of the child with COVID-19 or enrolled children of the employee with COVID-19 will be quarantined and will shift to Blended Learning Plus.
- All other siblings of students in the quarantine cohort group will be quarantined for 14 days and will shift to Blended Learning Plus. These children may return earlier, permitting the sibling exposed to COVID-19 tests negative 3 days after exposure.

COVID-19 symptoms include: Fever of 99.6F or higher, chills, cough, shortness of breath or difficulty breathing, fatigue, muscle or body aches, headache, new loss of taste or smell, sore throat, congestion or runny nose, nausea or vomiting, and/or diarrhea.

*** The CDC recently updated their guidance to state AT LEAST 10 days for quarantine with AT LEAST 24 hours with no fever without fever-reducing medication. MSR has determined to maintain the original guidance of 14 days for quarantine with 72 hours with no fever without fever-reducing medication to ensure the health and safety of all community members.

HEALTH AND SAFETY: MSR'S MULTI-LAYERED DEFENSE (CONT'D)

Parent Partnership and Transparency

The health and safety of all members of the community rely on the good-faith communication and transparency of everyone. The Montessori School of Raleigh pledges to communicate to parents and families in a timely and transparent manner about possible exposure to COVID-19 and/or other illnesses. All members of the community rely on each family to communicate information to the school in a timely and transparent manner about any possible exposure to COVID-19 and/or other illnesses. The community relies on parents to faithfully keep their children home from school if they are exhibiting any medical symptoms to avoid exposing other individuals to illness. Only by collaborating and partnering together can we maintain the highest levels of health and safety for our children. Parents should communicate all student illnesses and possible exposure to or diagnosis of COVID-19 to the school nurse immediately by calling the school at 919-848-1545.



It is important to remember that COVID-19 symptoms are similar to symptoms of other common illnesses and viruses. It is important for us as a community to stay empathetic and supportive of each other. No one desires to become infected with the virus or chooses to contract it. Infection, however, can happen. If and when it does, we will follow our protocol, expect all in the community to extend grace and courtesy, and unite in moving forward.

Counseling and Mental Health

Recognizing there will be different levels of comfort about returning to campus and navigating on-campus life, MSR has prepared extensive plans to support the community's well being throughout the 2020-21 school year. Social-emotional curricula to support students will be delivered through classroom instruction, the Agility Lab, and the Brier Creek Advisory Program.



ACADEMIC PROGRAMS

Toddler and Children's Houses

As we have shared previously, MSR is committed to keeping our Toddler/Children's House programs open, as we are considered a childcare facility offering an essential service for this level. The core academics will remain the same, but the Work Cycle will be modified to allow cleaning of materials between student use. Food preparation will be discontinued. Moreover, there will be a focus on personal hygiene and health education through Practical Life lessons. Students will also have designated work spaces in the classroom and use personal materials instead of communal ones. Outdoor learning spaces will be generously used. Interdisciplinary classes will continue while maintaining class cohort groups and may be delivered in different formats, based on scheduling.

Lower and Upper Elementary

Regardless of mode of delivery, our skilled Montessori teachers will provide a full Montessori curriculum to students. The core academics will remain the same, but the Work Cycle will be modified to allow cleaning of materials between student use. Students also will have designated work spaces in the classroom and use personal materials instead of communal ones. Lessons will be taught in small cohort groups and individually, and students will continue to manage their own work plans and lesson practice. Added focus will be given to students' social development and to providing alternative opportunities for projects and activities. Interdisciplinary classes will also continue for these levels while maintaining class cohort groups and may be delivered in different formats based on scheduling.

Middle and Upper School

The Middle and Upper School faculty is committed to delivering the complete MSR Academic and IB Diploma Programs this school year, through whichever delivery method is required. Students will study rich, diverse, and in-depth curricula in all academic subjects, including interdisciplinary courses, such as Physical/Health Education, Technology, Theater, Visual Arts, Music, Land and Livestock, Inquiry Skills, Leadership, Advisory, and College Counseling. The Middle and Upper School faculty will emphasize both academic and social-emotional development throughout all courses and programs. Particular focus is being given to providing engaging, experiential, and constructivist lessons in both On-Campus and Blended Learning environments.

ACADEMIC PROGRAMS

Agility Lab

Agility Lab support and instruction will continue while maintaining classroom cohort groups. It will be provided both virtually and within the classroom.

Early Bird, Encore, and Studios

At this time, we will provide after-school child care. It is important that students are limited to their cohort groups and are not intermixing. Please make sure to commit to Encore and other supplemental programs needed so we have an accurate count for staffing purposes. Early Bird, Encore, and Studios details can be found in Phase III of this guide.



STUDENT LIFE AND ACTIVITIES

Buses

Buses will pick up and operate on the same schedule as last year from both Lead Mine Campus and Southpoint Mall. Students will physically distance and must wear a mask while being transported on school buses. Bus capacity will be limited due to physical-distancing requirements; therefore, there will be NO SINGLE DAY BUS DROP-INS permitted.



Lunch and Snack

The My Hot Lunchbox program will be suspended for the beginning of the school year and may return when health conditions in our community improve. Therefore, parents will need to send all food and water necessary for the day with the student in personalized containers that the student can easily open. Any utensils needed should also be packed for the child, and these should be cleaned daily at home. Parents will not have the option of having outside vendors deliver food to campus. Students will be asked not to share food, and all food preparations and food activities will be temporarily discontinued. Students will eat outside, if possible, or at their designated spaces in the classroom. Microwaves and refrigerators will not be available to reduce congregating and the spread of germs on surfaces.



Outdoor Education

Outdoor education is an integral part of the Montessori curriculum and philosophy. Faculty will be taking students outdoors for class even more frequently than in previous years. The Re-Entry Task Force is researching the purchase of additional resources to facilitate more classes being held outdoors when weather and conditions permit.

Field Trips and Extended Trips

Due to the constantly changing health conditions locally and in locations across the United States and around the world, we will discontinue field trips and extended overnight trips for the 2020-21 school year.



STUDENT LIFE AND ACTIVITIES

In light of this change, faculty members are planning creative ways for all of our students to learn through experiential activities and transport themselves beyond the classroom and into new realms of understanding. If health conditions dramatically improve during the course of the school year to pre-COVID-19 levels of health and safety, the administration will reevaluate the possibility and logistics of trips.

Athletics

MSR athletic programs will follow the guidelines of the North Carolina High School Athletic Association (NCHSAA) and our athletic conference, the Triangle Middle School Conference. The state has announced that Fall sports competitions and practices will not start until after September 1. The possibility exists that school athletic competitions could be canceled for the Fall and Winter seasons. In the absence of competitive athletics, MSR foresees offering an after-school program focused on skills development and/or physical fitness.



Community Events

MSR will move large community events, gatherings, and meetings to virtual platforms. Events that allow healthy physical distancing of at least 6 feet between people, such as Garden Day, may be held following strict health and safety protocols. Parents should anticipate that parent-teacher meetings and student-led conferences will be held virtually via the Zoom conferencing platform.

Student Activities

Virtual activities and events will be held in lieu of field trips, student assemblies, arts performances, school-wide parent meetings, pep rallies, etc. Should health conditions in the community improve during the school year, MSR will reevaluate and consider moving back to in-person events.

CAMPUS FACILITIES

Drop-Off and Pick-Up

Lead Mine Campus: Lead Mine drop-off and pick-up times will be staggered to avoid crowding at entry and exit doors on campus. Reasonable accommodations will be made to help coordinate arrival and dismissal times for children in the same family or carpool and in early morning or afterschool programs. Additional details can be found in Phase III.

Brier Creek Campus: Brier Creek Campus will not need to utilize staggered start and end times, due to the availability of two drop-off locations on campus, and there will be no change to the start and end times for the Brier Creek Campus. Drop-off will be from 7:45–8:00 a.m. for both MS and US school students. Pick-up will run from 3:10–3:25 p.m. for all students. The Middle and Upper School schedule promptly begins at 8:00 a.m. and ends at 3:10 p.m. each day.

Cleaning and Sanitizing

Tom Thomas, Director of Buildings and Grounds, and his staff have been preparing for the opening of school for several months, and a well-articulated cleaning and sanitizing plan is now in place. Additional staff have been hired, and they will disinfect classroom materials and surfaces with the **Clorox Total 360® electrostatic sprayers** nightly. There are also new intensive disinfecting guidelines that our cleaning crews are following closely. Additionally, the school is providing hand sanitizing stations and proper disinfecting solutions and cleaning materials for use by faculty and staff. Bathrooms and common spaces will be cleaned and disinfected on a regular schedule throughout the school day.



CAMPUS FACILITIES

Air Filtration

The filters in each classroom have been upgraded to MERV 8. In addition, air will be circulated nightly throughout the buildings, and faculty will be encouraged to open windows and doors when weather conditions permit. Additionally, MSR is proud to announce that the school has completed the installation of needlepoint bipolar ionization technology to the HVAC systems of all school buildings on both campuses. In scientific testing, this cutting-edge technology demonstrates a 99.4% reduction rate of SARS-CoV-2 (COVID-19) on surfaces within 30 minutes.



Playgrounds

Student cohort groups will utilize playgrounds on a rotation with at least 34 minutes between groups. The CDC does not currently recommend disinfecting playgrounds, wood structures, or other outdoor surfaces as it has not been proven to reduce the risk of COVID-19.

Building Traffic Patterns

All doors, hallways, and stairs will be designated for one-way traffic in buildings to facilitate effective physical distancing. Traffic flow along sidewalks and across campus grounds will also have one-way traffic patterns. All community members will be expected to follow signs and directional arrows to navigate on campus. Physical distancing markers will be located outside building and classroom doors. Additionally, all classrooms will designate one entrance and one exit from the room. Phase III communication includes campus maps illustrating traffic patterns.

THANK YOU

Deepest Appreciation to the Task Force

The Re-Entry Task Force, charged with developing the plans, protocols, and guidelines needed to reopen the school for this fall, began meeting in early May 2020 under the leadership of then Interim Head of School, Jeannie Norris. The Sub Committees of the Task Force have collectively read hundreds of articles and policy statements from government agencies, health organizations, and educational institutions and consulted with physicians, epidemiologists, and other health experts in order to gain a thorough understanding of the issues and design a comprehensive approach to mitigating risk. These heroes have worked countless hours throughout the summer, not only to create the Re-Entry Plan but also to develop the school's comprehensive protocols and policy manual that encompasses even greater detail than presented in school communications to families.

We extend our deepest appreciation to all of the faculty and staff listed below for their superb leadership in preparing the school for the fall and thank them for the work they will continue to do between now and August 25 to ensure our readiness to welcome students back to MSR.

Task Force Subgroup A

Alicia Martin
Aubrie Hile-Hoffer
Caroline Farrell
Courtney Nutter
Emily Johnston
James Taylor
Jeannie Norris
Marian Godwin
Mark Kolman
Monica Rodriguez
Rose Barnett
Shelby Coury

Task Force Subgroup B

Aubrie Hile-Hoffer
Brant Morris
Beth Ryan
Courtney Nutter
Donna Boyd
Emily Johnston
Greg Dahlin
James Taylor
Jeannie Norris
Kim Wimpey
Laura Morrison
Lauren Anderson
Mark Kolman
Melissa Edwards
Monica Rodriguez
Nancy Melamed
Nora Ostler
Rose Barnett

Task Force Subgroup C

Aubrie Hile-Hoffer
Caroline Farrell
Hali Strykowski
James Taylor

Jeannie Norris
Krystin Knox
Kaley Mansour
Monica Rodriguez
Nora Ostler
Stephanie Henderson
Tresa Pickup

Task Force Subgroup D

Aubrie Hile-Hoffer
Alicia Martin
Ellen Boswell
Emily Johnston
Fran Strombotne
James Taylor
Jen Bitner
Jeannie Norris
Kate Falkiner
Lindsay Van Loon
Mark Kolman
Kaley Mansour
Monica Rodriguez
Stephanie Henderson
Tresa Pickup

Task Force Subgroup E

Amanda Rugh
Aubrie Hile-Hoffer
Andrew Beaver
Alec Campbell-Barner
Babe Clawson
Cathy Adams
Cathy Bocklage
Courtney Nutter
Emily Johnston
Greg Peele
James Taylor
Jeannie Norris
Kaley Mansour

Kathleen Kelly
Kelli Alvater
Mary Anna Arnold
Monica Rodriguez
Nancy Melamed
Tom Thomas

Task Force Subgroup F

Aubrie Hile-Hoffer
Alicia Martin
Caroline Farrell
Cameron Poole
Cathy Bocklage
Emily Johnston
Justine Ulrey
Kaley Mansour
Karen Richards
Lauren Anderson
Leisa Guvetis
Michelle Gilchrist
Stephanie Henderson
Tom Thomas

Task Force Subgroup G

Alicia Martin
Amanda Rugh
Aubrie Hile-Hoffer
Caroline Farrell
David Hughes
Ellie Cook
Jeannie Norris
Kate Falkiner
Marian Godwin
Melissa Edwards
Monica Rodriguez
Ruthanne Walker
Stephanie Henderson
Tresa Pickup
Wendy Peele

QUESTIONS?

Monica Rodriguez
Head of School
mrodriguez@msr.org

Aubrie Hile-Hoffer
Lower School Director
ahile-hoffer@msr.org

Caroline Farrell
Director of Enrollment Management
cfarrell@msr.org

David Hughens
Director of Marketing and Communications
dhughens@msr.org

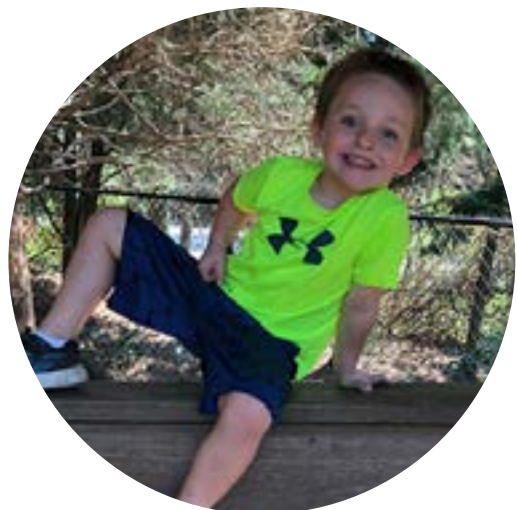
James Taylor
Middle and Upper School Director
jtaylor@msr.org

Marian Godwin
Director of Development
mgodwin@msr.org

Suzanne Baumgarten
Interim Director of Finance and Operations
sbaumgarten@msr.org

Tom Thomas
Director of Buildings and Grounds
tthomas@msr.org

Tracia Mills
School Nurse
schoolnurse@msr.org



PHASE III



PHASE III

As we open the year in the midst of the COVID-19 pandemic, it is vital for everyone in our school community to consistently follow a shared set of protocols and expectations for behavior both on and off our Lead Mine and Brier Creek campuses. The Montessori School of Raleigh is asking you to carefully review the following information, and commit to adhering to health and safety protocols and guidelines.

The health of our community is dependent upon the personal behavior of ALL members of our school community. At MSR we have gone to great lengths to create a multi-layered approach to mitigating the spread of COVID-19. Although we cannot predict with certainty that no one in our community will be exposed to or become infected with COVID-19, there are certain things we can do to protect our community.

All students and parents are expected to be familiar with and abide by the MSR Health & Safety protocols published in this re-entry plan. These protocols include details about when a student will be sent home, what quarantine periods will be applied, and other important information. We know this year will be different for all of us. Nevertheless, we are committed to staying aligned to our mission and providing an exceptional education for our students. We look forward to an outstanding new year!



CALENDAR AND EVENTS

School Calendar/Upcoming Events

We look forward to welcoming students back to our on-campus and Blended Learning Plus classrooms next week! For students on the Lead Mine Campus, please refer to classroom summer letters for your start date. For all students on the Brier Creek Campus, the first day of classes is Tuesday, August 25.

For a full list of calendar dates, please access your Parent Portal in Veracross. Important upcoming dates to make note of are as follows:

- August 23** New Parent Social (Virtual) (7:00 p.m.)
- August 24** Goal Setting Conferences MS & US students and families (Virtual)
- August 24** Children's House new parent Open House
(individually scheduled by class with new families)
- August 24** Lower Elementary Open House for new students (Virtual) (3:00 p.m.)
- August 24** Upper Elementary Parent Orientation for On-Campus Learning
(Virtual) (3:30 p.m.)
- August 25** First Day of School (Staggered Start schedule by level applies)
- August 25** Lower Elementary Parent Orientation for On-Campus Learning
(Virtual) (4:00 p.m.)
- August 26** Lower Elementary Parent Orientation for Blended Learning
(Virtual) (4:00 p.m.)



ACADEMIC CALENDAR 2020-21

Academic Calendar 2020-21

The Montessori School of Raleigh

2020-2021 School Calendar

August 2020						
Su	M	Tu	W	Th	F	Sa
						1
2	3	4	5	6	7	8
9	10	11	12	13	14	15
16	17	18	19	20	21	22
23	24	25	26	27	28	29
30	31					

September 2020						
Su	M	Tu	W	Th	F	Sa
		1	2	3	4	5
6	7	8	9	10	11	12
13	14	15	16	17	18	19
20	21	22	23	24	25	26
27	28	29	30			

October 2020						
Su	M	Tu	W	Th	F	Sa
				1	2	3
4	5	6	7	8	9	10
11	12	13	14	15	16	17
18	19	20	21	22	23	24
25	26	27	28	29	30	31

November 2020						
Su	M	Tu	W	Th	F	Sa
1	2	3	4	5	6	7
8	9	10	11	12	13	14
15	16	17	18	19	20	21
22	23	24	25	26	27	28
29	30					

December 2020						
Su	M	Tu	W	Th	F	Sa
		1	2	3	4	5
6	7	8	9	10	11	12
13	14	15	16	17	18	19
20	21	22	23	24	25	26
27	28	29	30	31		

January 2021						
Su	M	Tu	W	Th	F	Sa
					1	2
3	4	5	6	7	8	9
10	11	12	13	14	15	16
17	18	19	20	21	22	23
24	25	26	27	28	29	30
31						

February 2021						
Su	M	Tu	W	Th	F	Sa
	1	2	3	4	5	6
7	8	9	10	11	12	13
14	15	16	17	18	19	20
21	22	23	24	25	26	27
28						










March 2021						
Su	M	Tu	W	Th	F	Sa
	1	2	3	4	5	6
7	8	9	10	11	12	13
14	15	16	17	18	19	20
21	22	23	24	25	26	27
28	29	30	31			

April 2021						
Su	M	Tu	W	Th	F	Sa
				1	2	3
4	5	6	7	8	9	10
11	12	13	14	15	16	17
18	19	20	21	22	23	24
25	26	27	28	29	30	

May 2021						
Su	M	Tu	W	Th	F	Sa
						1
2	3	4	5	6	7	8
9	10	11	12	13	14	15
16	17	18	19	20	21	22
23	24	25	26	27	28	29
30	31					

June 2021						
Su	M	Tu	W	Th	F	Sa
		1	2	3	4	5
6	7	8	9	10	11	12
13	14	15	16	17	18	19
20	21	22	23	24	25	26
27	28	29	30			

July 2021						
Su	M	Tu	W	Th	F	Sa
				1	2	3
4	5	6	7	8	9	10
11	12	13	14	15	16	17
18	19	20	21	22	23	24
25	26	27	28	29	30	31

	School Closed		Lead Mine ONLY Half Day		Brier Creek Intersession
	Work Day/No School/No Encore		ALL SCHOOL Half Day/No Encore		
	First and Last Day of School		No School/Encore Available		
	All School Conference Day/Encore		Lead Mine ONLY Conference Day/Encore Available		

Calendar template by Vertex42.com

COMMUNICATIONS

Weather Alerts, School Closings, and Emergency Communications

In case of weather alerts, school closings, or other emergency communications, MSR will notify parents using the following methods:

- Email
- Phone (both home and cell)
- Website Pop-up
- WRAL.com

Please remember to keep your contact information updated in [Veracross](#) to ensure you are receiving these important communications from the school.

MSR Email Newsletters and Communications

MSR sends various email communications throughout the year including Updates from the head of school, alumni news, admission updates, news from the development office, Miner Details and more. If you aren't receiving Miner Details each week, please check your junk/spam folder.

MSR website (msr.org) and the Veracross Parent Portal

Our website is home to information about admissions, our programs, athletics, our community, giving, and more. The Veracross Parent Portal will be the place to find specific information about your student and his or her classes. Classroom websites for certain levels will also be accessible through the Parent Portal.

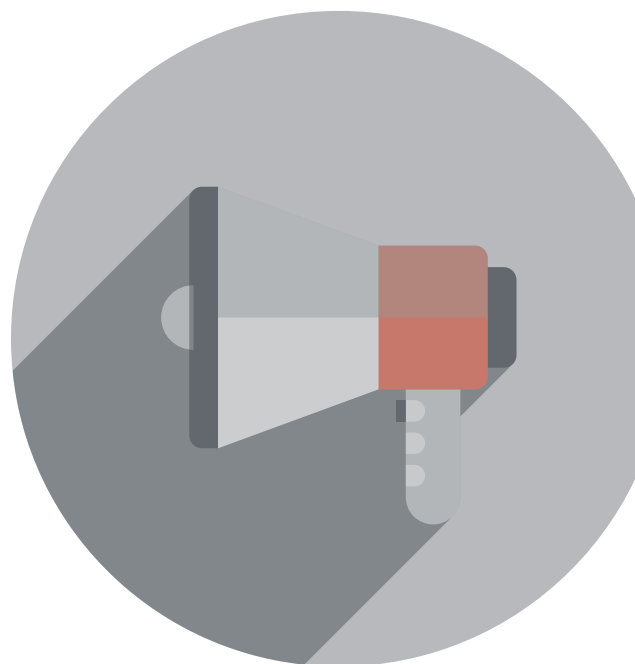
MSR on Social Media

Facebook: [The Montessori School of Raleigh](#)

Instagram: [msrminers](#)

Vimeo: [Video Channel](#)

LinkedIn: [The Montessori School of Raleigh](#)



TRAVEL

As a school, we cannot enforce best practice recommendations for travel outside of our campus. Travel is an area of concern for many members of the MSR community. Of particular concern are the weeks prior to the start of school and Labor Day weekend. We ask you to consider not traveling if it is not deemed essential. If travel is deemed essential, we ask you to heed local, national, and international travel warnings per the Centers for Disease Control and Prevention and the North Carolina Department of Public Health. As travel warnings and updates are made frequently, please check for the most up-to-date travel information. Should you have questions about the need to self-quarantine after travel, please contact James Taylor, Middle School and Upper School Head and/or Aubrie Hile-Hoffer, Lower School Head. If a quarantine becomes necessary, your child will move to our Blended Learning Plus model of learning.



PARKING LOT/CARLINE/FOOT TRAFFIC PROCEDURES

Carline Traffic and Foot Traffic campus maps on pages following instructions.

Lead Mine Campus:

Morning Staggered Start Times

- Upper Elementary 8:00 a.m. – 8:15 a.m.
- Lower Elementary 8:15 a.m. – 8:30 a.m.
- Children's House 8:30 a.m. – 8:45 a.m.
- Toddler 8:45 a.m. – 9:00 a.m.

All drop-off and pick-up procedures are designed to manage the number of interactions between community members while on campus as recommended by proper health/safety protocols.

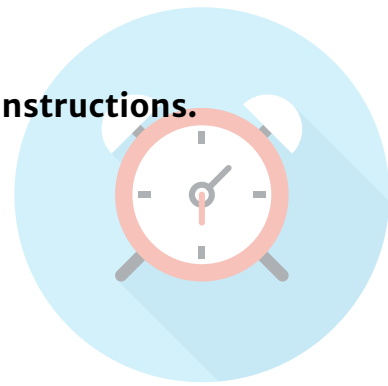
- Students should be dropped off by one member of the household when possible.
- The school discourages carpooling at this time to reduce mixing of cohorts and limiting exposure.
- All Elementary students will utilize the carline in the morning and afternoon.
- Children's House and Toddler families may park and escort in the morning and utilize the carline in the afternoon.

Morning Drop-Off Procedures and Temperature Checks Elementary

- Students will be dropped off curbside starting down by the Watson Center.
- Members of the administration and faculty will complete the screening process for students.
- Once cleared, students may exit the car and walk to their classroom exterior door.
- There will be no park-and-escort available for Elementary.
- If you or your child have an elevated temperature reading, you will be asked to pull down to the holding area to receive a second temperature check.

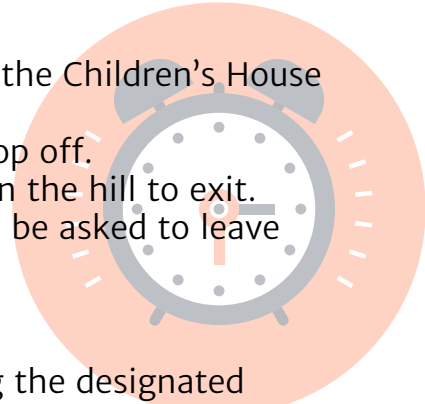
Toddler/Children's House

- Families may park in the first 3 sections of the parking lot, crossing the street using the paths in front of Building B. Students and parents ages 3 and up (CH) need to wear masks.
- As you cross the street, you need to walk to the right towards the gym and follow the traffic pattern. Administrators and faculty will be stationed along the way up the hill.
- Please wait 6 feet apart on the designated spaces until a temperature screener is ready for you.
- If both parent and child check fine, they may proceed up the hill.



PARKING LOT/CARLINE/FOOT TRAFFIC PROCEDURES

- Children's House will take a left and drop off along the front of the Children's House building.
- Toddler families will walk around the back of the building to drop off.
- Parents will continue around, through the playground, and down the hill to exit.
- If any parent has an elevated temperature, parent and child will be asked to leave campus.



Late Drop-Off

It is important for students to be dropped off and picked up during the designated staggered times. If you are going to be late, please call the school office and pull up to the first crosswalk. Someone will come out to the car to assist you, complete the screening process, and take the student to the appropriate classroom. Parents may not walk up to the classroom with a child. Students will not be admitted to a classroom without completing the screening process.

Afternoon Staggered Pick-Up Times

*All students will be picked up through the carline.

Toddler 11:50 a.m.

Children's House 12:00 p.m.

Toddler, Children's House Extended Day and Encore 2:45 p.m.

Elementary 3:00 p.m.

Afternoon Staggered Pick-Up Procedures for All Students

- Students should be picked up by the same household member who dropped off, when possible.
- We discourage carpooling to reduce mixing of cohorts and exposure to risk.
- Each family will receive printed carline tags to place in their car window to aid in the safe release of students.

Toddler

- Parents should pull up at the Watson Center where students will be placed in the car.
- If a parent needs to exit their vehicle to complete car seat buckling, they are to wear a mask.
- Parents should be as quick as possible buckling child seats and then continue moving forward to exit the campus.

Children's House

- Parents will pull up to the third crosswalk where the handicapped sign is located.
- Students will be placed in cars by administrators, but not buckled. Students, if developmentally appropriate, will also be prompted to open their own car doors.
- There will be a designated area where parents can park to get out and properly buckle their children.
- Parents are required to wear a mask if they exit their vehicle.

PARKING LOT/CARLINE/FOOT TRAFFIC PROCEDURES

Elementary

- Parents will pull up outside the Watson Center for student pick-up.
- Students will be released to their cars and administration and faculty will be present on the sidewalk to encourage students to get in their cars quickly and safely.

Early Pick-Up

If parents/guardians are picking up early, they must notify the school at 919-848-1545, pull in front of the administration building (Toddler/CH) or classroom area, and the student will be escorted/released to the car.

Late Pick-Up

Picking up after the designated pick-up time will result in an automatic \$25 late fee plus \$15 for every 5 minutes the student is left after the ten-minute grace period.

Coming onto Campus

Parents are not permitted to walk onto campus or return to campus after designated arrival and dismissal times without notifying the school at 919-848-1545. For all needs including forgotten items, parents must call the front desk. Items for students will be delivered to the appropriate classroom by a school employee. Buildings will not be opened for parents who return to campus without notifying the administration.

Brier Creek Campus Drop-Off and Pick-Up Times

The Brier Creek Campus will not utilize staggered start times due to the availability of two drop-off locations on campus. There will be no change to the start and end times for the Brier Creek Campus. Drop-off will be from 7:45 a.m. to 8:00 a.m. for both MS and US school students. Pick-up will run from 3:10 p.m. to 3:25 p.m. for all students.

- Families with ONLY Middle School students will drop at the Middle School Traffic Circle
- Families with ONLY Upper School students will drop at the sidewalk in the middle of the Upper School Parking Lot.
- Families with both Middle and Upper School Students will drop all students off in the middle of the Upper School Parking Lot.

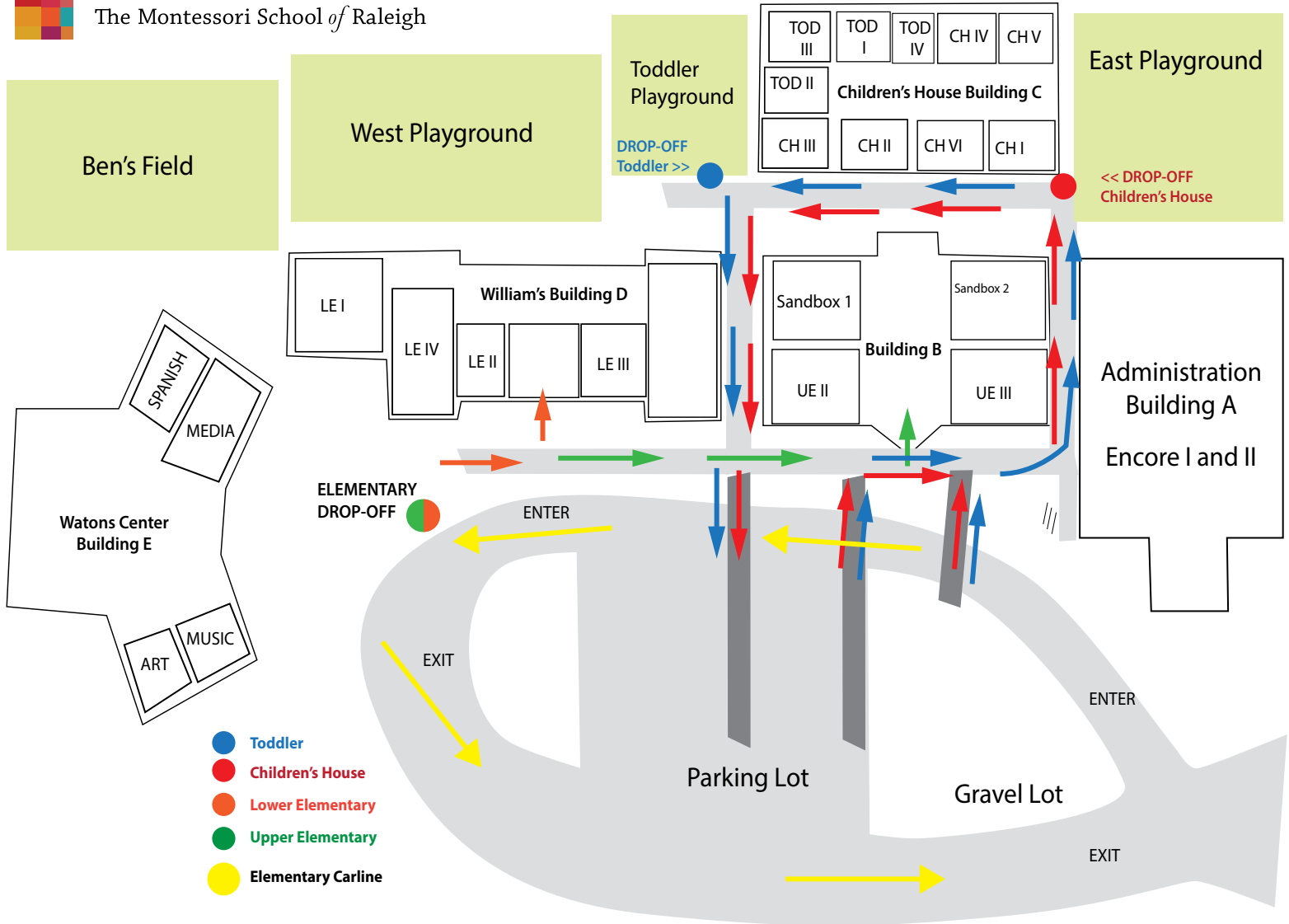
In the morning, parents must wait until their student has been cleared for class activities for the day by a temperature check. A second temperature check with another device will be performed to verify any student with an elevated temperature.

PARKING LOT/CARLINE/FOOT TRAFFIC PROCEDURES

Lead Mine Campus Carline and Foot Traffic Map



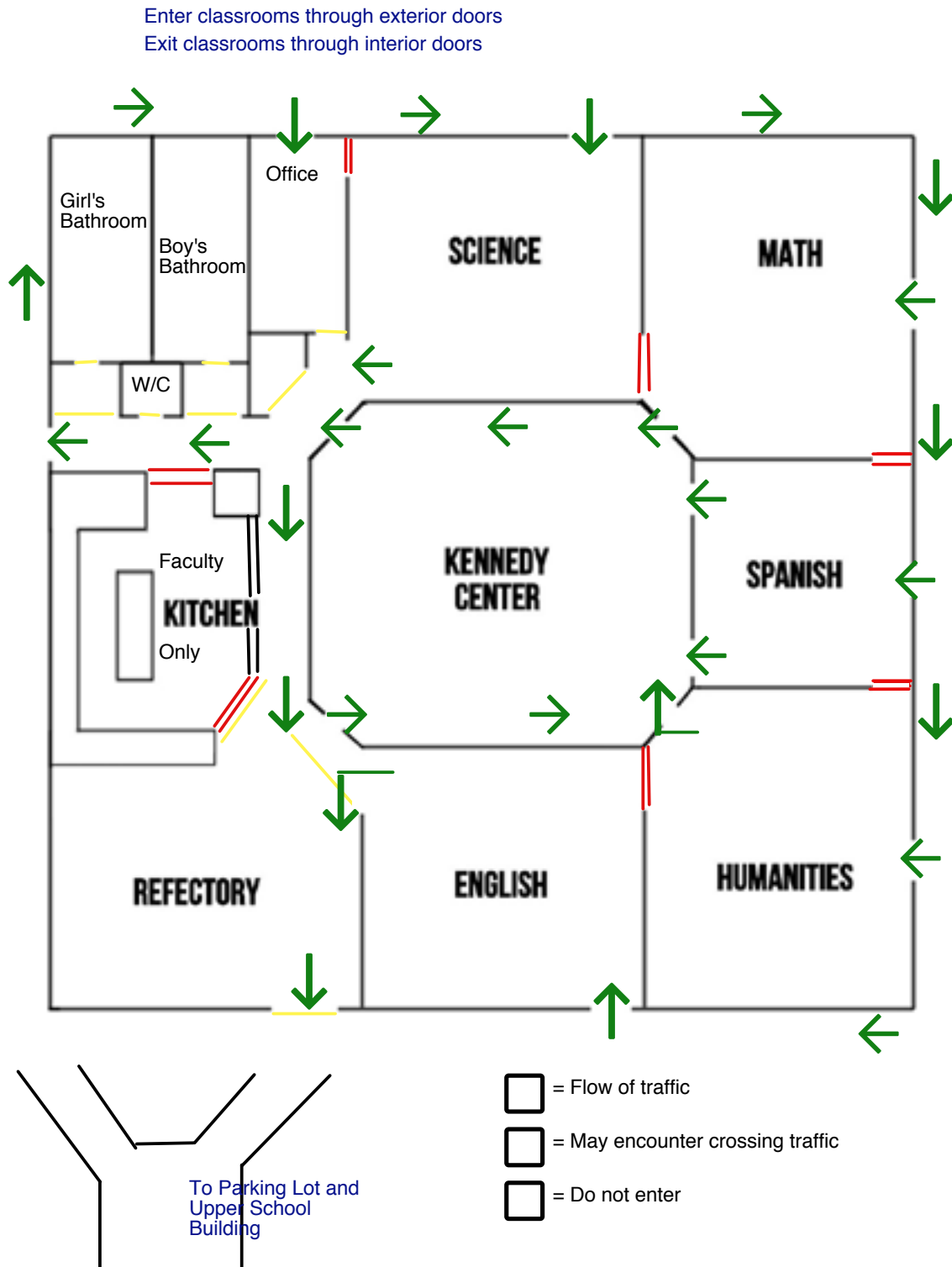
The Montessori School of Raleigh



PARKING LOT/CARLINE/FOOT TRAFFIC PROCEDURES

Middle School Building Foot Traffic Map

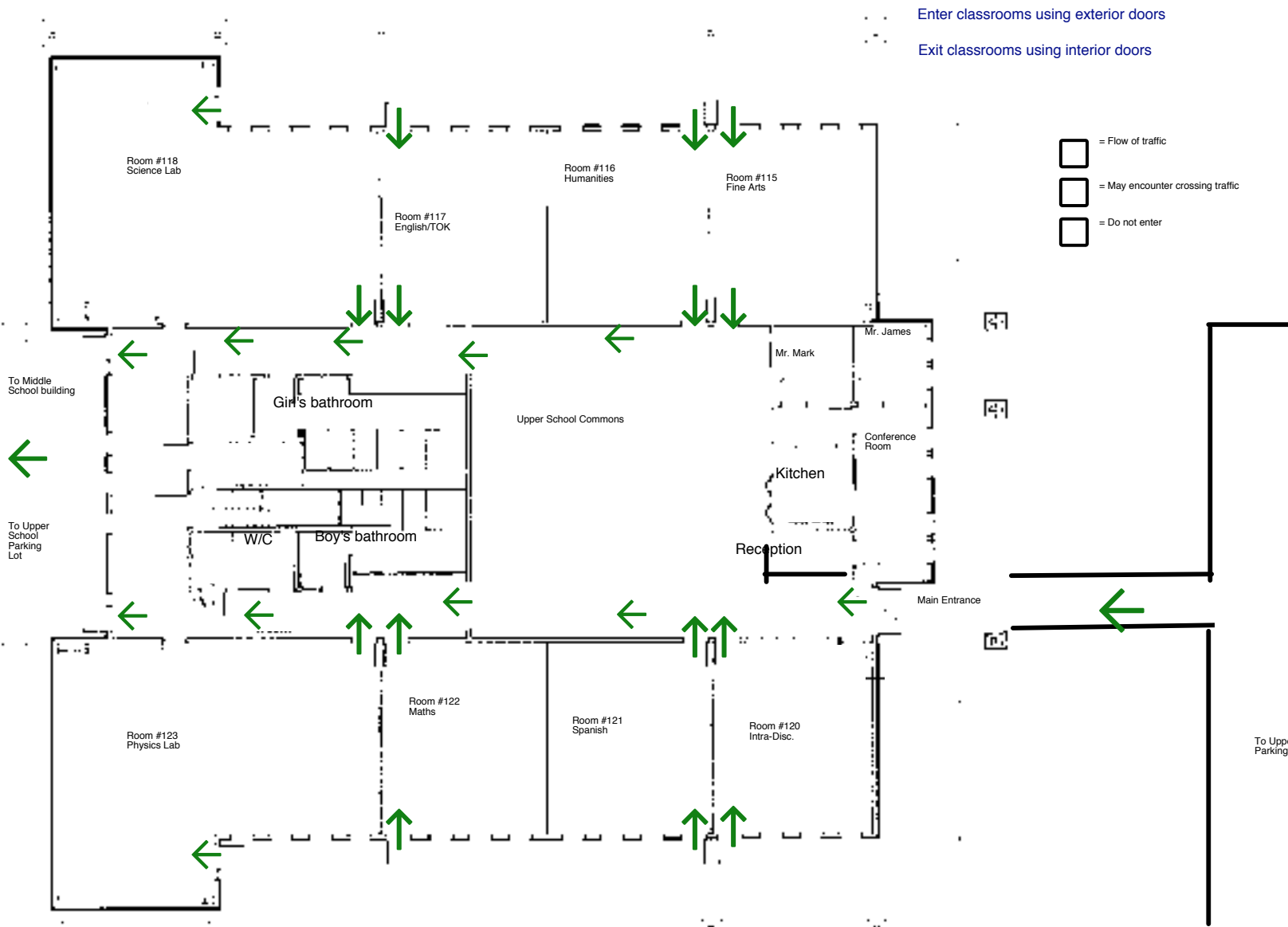
**Please note that the front door is an exit only now.



PARKING LOT/CARLINE/FOOT TRAFFIC PROCEDURES

Brier Creek Campus Upper School Building Foot Traffic Map

**Please note that the front door is an exit only now.



CLASS SIZES

On-campus class sizes for both campuses have been intentionally reduced this school year in order to ensure proper physical distancing within each classroom including Interdisciplinary and Before/After School. In addition, it became important that all cohort groups stay intact and together throughout the day to mitigate exposure. Class sizes range from 4 students in our youngest program to 18 students in our oldest Lead Mine program. Brier Creek Campus courses and classes will all accommodate social distancing with only 5 to 12 students assigned to each room.



EARLY BIRD/ENCORE SPECIFICS

Early Bird is available for Toddler through Upper Elementary students and campus will open at 7:30 a.m. for students that are enrolled in the Early Bird or Full Day Program. Early Bird will be located in the child's homebase class and may be monitored by their classroom teacher or another adult on campus until their school day begins.

Campus will remain open until 5:30 p.m. Faculty will stay until 6:00 p.m. if a child has not been picked up. Any pick-up after 6:00 p.m. will result in late fees.

In the Toddler program, there will be one class that is designated for the Full Day students. The assistant in this classroom is also the Encore teacher and she will be present for most of the day.

In Children's House, Encore teachers will assist in the classrooms and partner with the lead teachers with the afternoon program. Students will stay in that environment and have lunch, nap, and engage in afternoon activities based on their developmental age.

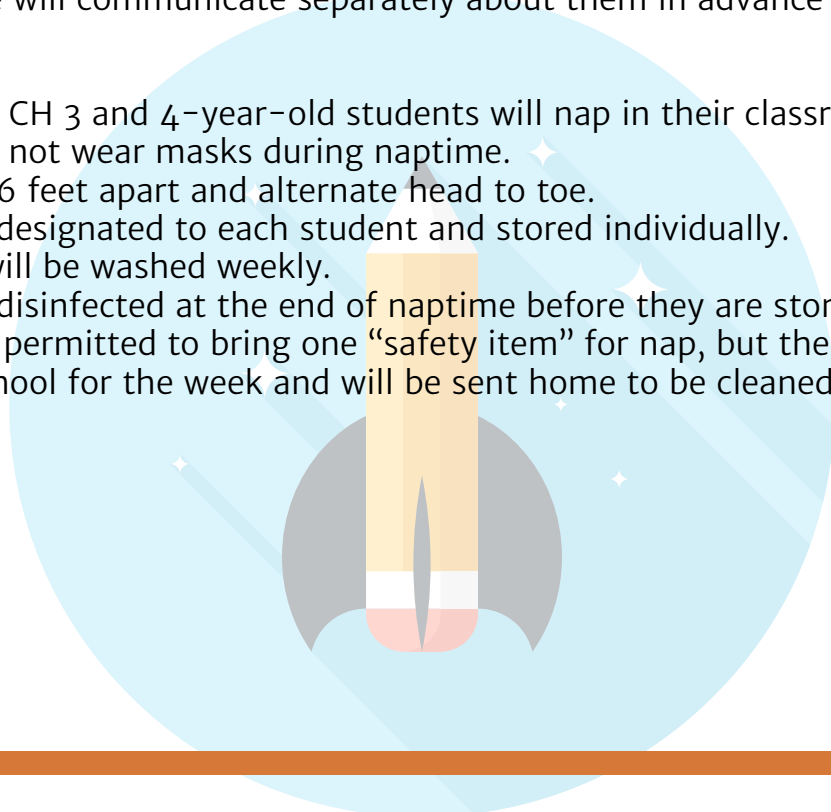
Elementary students will stay in their classrooms and Encore staff will enter at 3:00 p.m.

If your student is enrolled in Encore, please make sure you send them an additional individually-wrapped snack for the afternoon and follow any other additional details given by the classrooms.

Currently, Conference Care and Spring Break Care are TBD as we see how things progress and we will communicate separately about them in advance of their running.

Nap

- Toddlers and CH 3 and 4-year-old students will nap in their classrooms.
- Students will not wear masks during naptime. ✨
- Mats will be 6 feet apart and alternate head to toe.
- Mats will be designated to each student and stored individually.
- Mat sheets will be washed weekly.
- Mats will be disinfected at the end of naptime before they are stored for the evening.
- Students are permitted to bring one "safety item" for nap, but the item needs to remain at school for the week and will be sent home to be cleaned weekly.



BLENDED LEARNING PLUS



Students will be provided weekly and/or daily schedules by teachers before the beginning of each week with the required times and Zoom links for classes and lessons. Teachers will clearly communicate to students the expectations and meeting times through multiple channels of communication, including Veracross Classroom Websites, Google Classrooms, Wakelet, Managebac Classrooms (new Learning Management System for Middle and Upper School), emails, and verbal announcements during formal classes and meetings. Student expectations will be set early and their participation in Zoom meetings or full classes is expected for attendance.

Students will participate in both synchronous and asynchronous lessons, which will vary in structure and timing by level and division. Blended Learning Plus teachers at all levels will hold individual meetings with students, as the work cycle, workflow, projects, and assignments require.

Regular written and verbal communication and feedback will be provided to students for both formative daily assessments and summative final unit assessments. There will also be open office hours for parents and opportunities for the students to connect with the on campus learners in their classrooms to join community meetings and lessons through Zoom with their on-campus teacher. Even though there will be a designated Blended Learning Plus teacher, the on campus teachers will be partnering and collaborating to make sure that the students feel part of the class.

If a student misses a class, meeting, or assignment without any communication or correction within a week, an email will be sent home to parents by the teacher or advisor. If assignments and meetings are not made up within a week of that communication, a meeting will be organized between the teacher, advisor (MS & US only), student, and parents to work out an effective solution. Our goal as a school is to ensure that all students are engaged in their learning. We understand that learning from home can be challenging and these meetings are intended to provide the support, engagement, and encouragement our students need to stay on track.

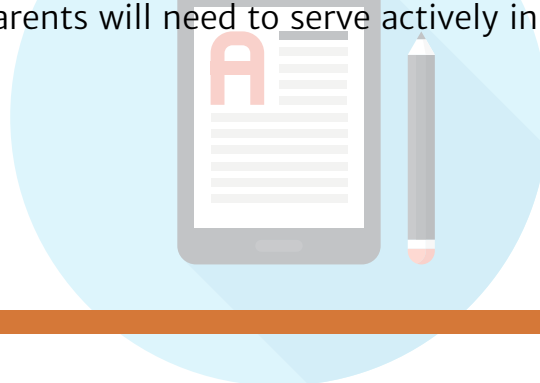
BLENDDED LEARNING PLUS

Technology and Supplies (may vary based on level)

- Students are required to have a computer (not a tablet) with a functioning speaker, microphone, and web-camera.
- Students need access to a stable wifi connection that can support continuous Zoom calls as well as uploading and downloading of computer files and videos that may be required/used in class.
- Students will still need all the supplies necessary for organization as listed in the school supply lists for their level
- Students may benefit from access to a printer as that may reduce screen time by printing materials to allow them to read and work off-line.
- Students may also benefit from the use of headphones that have a built in microphone as they would reduce distractions and promote engagement.
- Parents should assist students in the event they have trouble with the computer, wifi connection, or accessing the Zoom meeting room. Teachers will have a call in phone number to utilize in cases of internet connectivity issues.
- MSR has deployed business-grade Logitech streaming web cameras and microphones to each classroom. Blended Learning Plus students will enjoy HD video feeds of classroom discussions, presentations, and classroom instruction, and the 360 microphones will insure clear communication.

Students will need to gather their materials and prepare for their classes ahead of time and should read their lesson plans as soon as they are posted. Students are expected to log in to each class, stay for the entire class time with their video on, and to turn in all assignments on time unless otherwise instructed by the teacher. Teachers may require additional one-on-one meetings with Blended Learning Plus students to ensure that he/she is learning and progressing.

The classroom teachers rely on parents to be active partners in their student's learning while they are working virtually from home. Parents checking in with their child on a daily basis to discuss assignments, deadlines, materials needed, etc. will be vital to make students feel accountable, encouraged, and supported. While our Montessori philosophy seeks to build student self-efficacy, self-advocacy, and independence, most children and adolescents still need the steady positive influence, encouragement, and appropriate monitoring of the adults in their lives. As our teachers have fewer daily interactions with students one-on-one to query and directly observe their progress, parents will need to serve actively in this role.



BLENDED LEARNING PLUS

****Parents are asked to honor the quarterly commitment made to Blended Learning Plus. It takes an incredible amount of time and planning to provide this program. Honoring your commitment to the quarterly timeline allows the school to plan and provide the best programs possible.**

Blended Learning Plus: Lead Mine Campus

Because of the wide range of developmental stages, Blended Learning Plus will look very different at each level. There will be parent orientations and preparation meetings the first week of school to set expectations and help students and parents become solid, successful online learners.

On the Lead Mine Campus, there will be designated platforms for the students where lessons, materials, and assignments will be posted. Our youngest students will have weekly units of materials that they will need to pick up. There will be additional Parent Orientations for Blended Learners and we will offer Q&A and Pep Talk opportunities in regards to Blended Learning Plus.

Blended Learning Plus: Brier Creek Campus

Students are expected to be available and in class for the entire class period. However, teachers may dismiss students early to work independently or in group breakout rooms depending on the lesson plan for the day. Some classes, lessons, or projects may function asynchronously. This is by design and is intended to provide equal access, flexibility, and variation in approaches to learning. Our goal is to cater equally to students who are learning on campus and those who are learning remotely.

Blended Learning Plus students in Middle and Upper School are also expected to meet one-on-one with their advisors at least once a week. Middle and Upper School Blended Learning Plus students will also be expected to attend all advisory lessons and required school-life events. Teachers have designed the Blended Learning Plus model in such a way that students access both the full academic and social-emotional learning components of the MSR Montessori and IB Curriculums. Parents should reach out to teachers with particular questions about lessons, deadlines, assessments, and assignments.



BUSING PROTOCOLS

Bus transportation services will be available before and after school from the Lead Mine to Brier Creek campuses and the Southpoint Durham location to Brier Creek Campus.

2020 Bus Modifications

- Students will be screened before boarding.
- Buses will operate at reduced capacity.
- Families must sign up in advance as space is limited. No drops-in will be allowed.
- Students will sit in designated spaces to comply with social distancing guidelines.
- Students and staff will be required to wear face masks while riding the bus.
- Buses will be cleaned and disinfected regularly prior to morning and afternoon trips.

Specific details for bus transportation services (including schedules, pick-up and drop-off locations, and physical distancing requirements) will be provided to registered bus students and accessible on the Veracross Parent Portal.



ATHLETICS

Athletics

Due to safety measures surrounding COVID-19 and sports, an issue that affects all levels of competition from youth to professional, MSR has made the decision to suspend fall athletic competitions. Our Athletic Director, Courtney Nutter, along with other ADs and administrators will continue to monitor and reassess for the Winter and Spring Seasons.

In place of the interactive, team programs, the MSR Athletic Department and coaches plan to provide practices that focus on sport specific skills and player conditioning for individual athletes until competitive sports resume.

This fall, coed cross country, boys soccer, and girls volleyball will engage in individualized skills practice. Student-athletes will practice on the campus where they attend classes and will meet an average of 2- 4 times a week after school.

We expect these practices to begin on or around Tuesday, September 8, following Labor Day weekend. Specific dates and times will be shared soon and you will need to sign up for athletics within the parent portal on Veracross. All practice sessions will follow social distancing protocols and guidelines set forth by the NCHSAA, the NCISAA, the CDC, and the NCDHHS.



OTHER PROGRAMS

Studios

At this time, with the importance of maintaining cohorts and not having students mix within indoor spaces, we are opting to suspend studio opportunities as this time. We will continue to re-evaluate and will offer classes when we feel it is safe to do so. In addition, we are creatively brainstorming possible alternatives virtually for our students. Stay tuned for more details.

Interdisciplinary

For Quarter 1, our plan is to take advantage of the NC weather and provide as many outdoor experiences as possible. Our Interdisciplinary program is the hardest to schedule based on the amount of students that an individual teacher interacts with, within a given day. We are committed to maintaining the bubbles and the safety of our students and faculty and recognize that being outdoors is safest. So, we are ordering event tents that can be used as outdoor classrooms and will be planning a schedule of activities for students around these new outdoor classrooms. You may find that some offerings are by quarter, semester or weekly depending on the availability of the outdoor space. In addition, those who have opted for Blended Learning Plus, will also have Interdisciplinary opportunities made available.

The Agility Lab and Outside Consultants

Those who are fortunate to be able to receive services from our Agility Lab team will continue to do this year. They will however, be adjusting how it is that they deliver these services. Again, to maintain the cohort groupings, there will not be mixed groups who receive services and we will be limiting the interactions between the team and the students to one cohort a day at least. In addition, those in Blended Learning Plus, those that need additional support in Blended Learning Plus, and those that need to be seen daily, will have a combination of in person and virtual instruction. We are suspending outside consultants from coming to campus at this time, and will recommend virtual sessions. As always, we will continue to reassess and when the campus is ready to receive outside visitors we will welcome everyone back.





The Montessori School *of* Raleigh

RE-ENTRY PLAN COMMUNICATION



PHASE I	COMMUNICATION	Released July 2
SURVEY	COMMUNICATION	Released July 17 (Survey about Blended Learning Plus, busing, and Encore)
PHASE II	COMMUNICATION	July 29
PHASE III	COMMUNICATION	August 21



We are grateful to Grandview Preparatory School in Boca Raton, Florida for granting us permission to use style and conceptual elements from the superb Re-Entry Plan Grandview prepared for its families.